

AIS in Paris (Multipsk + GoogleEarth + MarineTraffic)

AIS messages decoded by Multipsk (Version 4.23 on test) the 27/12/2012 between 13:16 and 13:36 UTC in Paris 13th, messages in "Compact display".

Equipment: FUNcube Dongle on 161975 KHz with IF gain1 to IF gain 6 to the maximum and a Vista laptop, the output being a I/Q signal.

SdR FM Demodulation: Multipsk with the "Direct via the sound card" function (the decoding follows the demodulation).

<RX> 27/12/12 12:22:37 UTC - AIS (7.018220 MHz [AF=960 Hz])

Message: 2 / MMSI: 227789230 (France) / Status: under way using engine / Course over ground: 289.7° / Position: 002°22.27' E 48°50.52' N / 13:16:10

Message: 2 / MMSI: 227789230 (France) / Status: under way using engine / Course over ground: 325.5° / Position: 002°22.27' E 48°50.52' N / 13:16:18

Message: 20 / MMSI: 002268220 St. (France) / Offset 1: 1534 / Consecutive 1: 1 / Time-out 1: 7 mn / Increment 1: 750 / Offset 2: 2250 / Consecutive 2: 1 / Time-out 2: 7 mn / Increment 2: 0 / Offset 3: 1125 / Consecutive 3: 1 / Time-out 3: 7 mn / Increment 3: 0 / 13:16:22

Message: 2 / MMSI: 227789230 (France) / Status: under way using engine / Course over ground: 330.5° / Position: 002°22.27' E 48°50.52' N / 13:16:23

Message: 2 / MMSI: 227789230 (France) / Status: under way using engine / Course over ground: 275.3° / Position: 002°22.27' E 48°50.52' N / 13:16:27

Message: 4 / MMSI: 002268220 St. (France) / Date and time: 27 December 2012 13:16:42 UTC / Position: 002°12.95' E 48°53.84' N / 13:16:43

Message: 2 / MMSI: 227789230 (France) / Status: under way using engine / Course over ground: 45.3° / Position: 002°22.27' E 48°50.52' N / 13:16:59

Message: 2 / MMSI: 227789230 (France) / Status: under way using engine / Course over ground: 185.0° / Position: 002°22.27' E 48°50.52' N / 13:17:14

Message: 2 / MMSI: 227789230 (France) / Status: under way using engine / Course over ground: 232.2° / Position: 002°22.27' E 48°50.52' N / 13:17:18

Message: 2 / MMSI: 227789230 (France) / Status: under way using engine / Course over ground: 227.3° / Position: 002°22.27' E 48°50.52' N / 13:17:23

Message: 4 / MMSI: 002268220 St. (France) / Date and time: 27 December 2012 13:17:22 UTC / Position: 002°12.95' E 48°53.84' N / 13:17:23

Message: 3 / MMSI: 226006170 (France) / Status: under way using engine / Course over ground: 142.0° / Position: 002°22.37' E 48°50.36' N / 13:17:33

Message: 2 / MMSI: 227789230 (France) / Status: under way using engine / Course over ground: 223.9° / Position: 002°22.27' E 48°50.52' N / 13:17:50

Message: 1 / MMSI: 226005830 (France) / Status: not defined / Course over ground: 142.6° / Position: 002°22.58' E 48°50.22' N / 13:17:51

Message: 2 / MMSI: 227789230 (France) / Status: under way using engine / Course over ground: 6.6° / Position: 002°22.27' E 48°50.52' N / 13:17:59

Message: 4 / MMSI: 002268220 St. (France) / Date and time: 27 December 2012 13:18:02 UTC / Position: 002°12.95' E 48°53.84' N / 13:18:03

Message: 2 / MMSI: 227789230 (France) / Status: under way using engine / Course over ground: 33.7° / Position: 002°22.27' E 48°50.52' N / 13:18:30

Message: 1 / MMSI: 226005830 (France) / Status: not defined / Course over ground: 142.4° / Position: 002°22.65' E 48°50.17' N / 13:18:31

Message: 2 / MMSI: 227789230 (France) / Status: under way using engine / Course over ground: 116.9° / Position: 002°22.27' E 48°50.52' N / 13:18:42

Message: 1 / MMSI: 226005830 (France) / Status: not defined / Course over ground: 144.8° / Position: 002°22.68' E 48°50.14' N / 13:18:51

Message: 2 / MMSI: 226006170 (France) / Status: under way using engine / Course over ground: not available / Position: not available / 13:19:03

Message: 2 / MMSI: 226006170 (France) / Status: under way using engine / Course over ground: not available / Position: not available / 13:19:13

Message: 2 / MMSI: 227789230 (France) / Status: under way using engine / Course over ground: 267.0° / Position: 002°22.27' E 48°50.52' N / 13:19:30

Message: 2 / MMSI: 226006170 (France) / Status: under way using engine / Course over ground: 139.9° / Position: 002°22.55' E 48°50.21' N / 13:19:33

Message: 2 / MMSI: 226006170 (France) / Status: under way using engine / Course over ground: 133.9° / Position: 002°22.60' E 48°50.17' N / 13:20:03

Message: 2 / MMSI: 226006170 (France) / Status: under way using engine / Course over ground: 135.4° / Position: 002°22.62' E 48°50.16' N / 13:20:13

Message: 2 / MMSI: 226006170 (France) / Status: under way using engine / Course over ground: 141.2° / Position: 002°22.71' E 48°50.09' N / 13:21:03

Message: 2 / MMSI: 226006170 (France) / Status: under way using engine / Course over ground: 142.9° / Position: 002°22.74' E 48°50.07' N / 13:21:23

Message: 2 / MMSI: 226006170 (France) / Status: under way using engine / Course over ground: 140.0° / Position: 002°22.76' E 48°50.05' N / 13:21:33

Message: 3 / MMSI: 227789230 (France) / Status: under way using engine / Course over ground: 307.9° / Position: 002°22.27' E 48°50.52' N / 13:23:04

Message: 3 / MMSI: 227789230 (France) / Status: under way using engine / Course over ground: 330.7° / Position: 002°22.27' E 48°50.52' N / 13:23:24

Message: 2 / MMSI: 227789230 (France) / Status: under way using engine / Course over ground: 137.9° / Position: 002°22.52' E 48°50.26' N / 13:31:08

Message: 2 / MMSI: 227789230 (France) / Status: under way using engine / Course over ground: 141.3° / Position: 002°22.57' E 48°50.23' N / 13:31:40

Message: 2 / MMSI: 227789230 (France) / Status: under way using engine / Course over ground: 141.9° / Position: 002°22.57' E 48°50.22' N / 13:31:44

Message: 2 / MMSI: 227789230 (France) / Status: under way using engine / Course over ground: 141.6° / Position: 002°22.58' E 48°50.22' N / 13:31:48

Message: 2 / MMSI: 227789230 (France) / Status: under way using engine / Course over ground: 143.3° / Position: 002°22.58' E 48°50.21' N / 13:31:52

Message: 2 / MMSI: 227789230 (France) / Status: under way using engine / Course over ground: 135.7° / Position: 002°22.63' E 48°50.18' N / 13:32:24

Message: 2 / MMSI: 227789230 (France) / Status: under way using engine / Course over ground: 136.0° / Position: 002°22.63' E 48°50.17' N / 13:32:28

Message: 2 / MMSI: 227789230 (France) / Status: under way using engine / Course over ground: 138.8° / Position: 002°22.63' E 48°50.17' N / 13:32:32

Message: 2 / MMSI: 227789230 (France) / Status: under way using engine / Course over ground: 143.8° / Position: 002°22.64' E 48°50.17' N / 13:32:36

Message: 2 / MMSI: 227789230 (France) / Status: under way using engine / Course over ground: 150.2° / Position: 002°22.64' E 48°50.17' N / 13:32:40

Message: 2 / MMSI: 227789230 (France) / Status: under way using engine / Course over ground: 156.0° / Position: 002°22.64' E 48°50.16' N / 13:32:44

Message: 2 / MMSI: 227789230 (France) / Status: under way using engine / Course over ground: 159.2° / Position: 002°22.64' E 48°50.16' N / 13:32:48

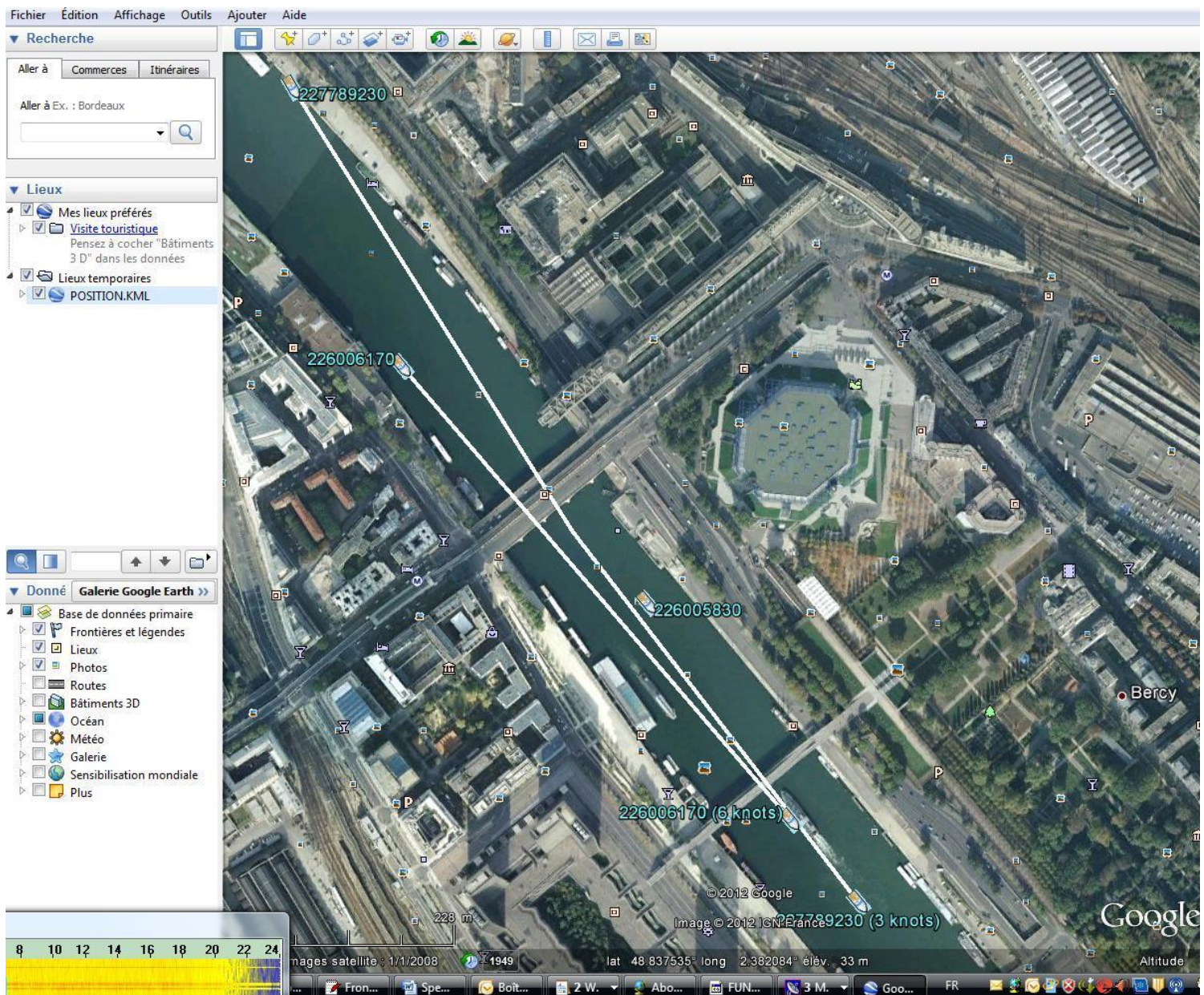
Message: 2 / MMSI: 227789230 (France) / Status: under way using engine / Course over ground: 138.9° / Position: 002°22.77' E 48°50.05' N / 13:36:28

At the end of the reception, after clicking on the “**GoogleEarth**” and “**Display all on:**” buttons, all decoded AIS positions are displayed on GoogleEarth . Below is a snapshot.

It can be seen that several ships positions (the 220605830, for example) and routes (white dash of the ship 227789230, for example) appear on the Seine between Bercy (the circus on the right) and the Francois Mitterrand library (bottom left). The speed appear after the MMSI (3 knots, for the 220605830) when a route (white dash) can be formed with several successive decoded AIS positions.

Note that the MMSI (220605830, for example) can be replaced by the name of the ship if known, this function being possible thanks to the Shipdata.txt data file (distributed by Eric Earl in Atlanta and Michael Heinemann and integrated in the Multipsk.zip package).

Note at the extreme bottom left of this GoogleEarth snapshot, a part of the SdR Multipsk waterfall.



If the “Connection to MarineTraffic.com” button is pushed, all the decoded AIS positions are transmitted to the **MarineTraffic** WEB site, which displays them (<http://www.marinetraffic.com/ais/fr/default.aspx?level0=100>).

Here is a snapshot of the map with the characteristics of the ship 227789230 (3 knots of speed). It is written in French but can be written in English (“Carte” is worth for “Map” and “Navires” for “Ships”).

It can be seen that the name of the ship is OCCITANIA. It carries goods (it is a barge) and it is travelling. A picture of the ship can be associated to the ship, with details.

MarineTraffic.com

Carte | Navires | Ports | Galerie

Recherche | langue

Plan | Satellite | Simple

OCCITANIA

Pavillon: France

Type de navire: marchandise

État: En route

Vitesse / route: 2.4 kn / 159°

Longueur x Largeur: 0 m X 0 m

Destination: 82

Reçu (1): 0h 30min depuis

[Afficher le trajet du navire](#)

[Distance à ...](#)

Pas de photos pour ce navire

[Télécharger une photo](#)

[Détails sur le navire](#)

plus d'actions

Actualiser dans: 95" [Actualiser maintenant!](#)

Navires Like 49k

dans le réseau: 43656. Navires affichés: 3.

© MarineTraffic.com, [Lisez les Conditions d'utilisation](#) [Avis](#): Les positions des navires peuvent dater d'une heure ou être incomplètes. Les données sont fournies pour information seulement et en aucun cas pour la sécurité de la navigation Tous droits réservés. Aucune partie de MarineTraffic peut être copiée, reproduite ou retransmise

Available on the iPhone **App Store**

Aidé par: