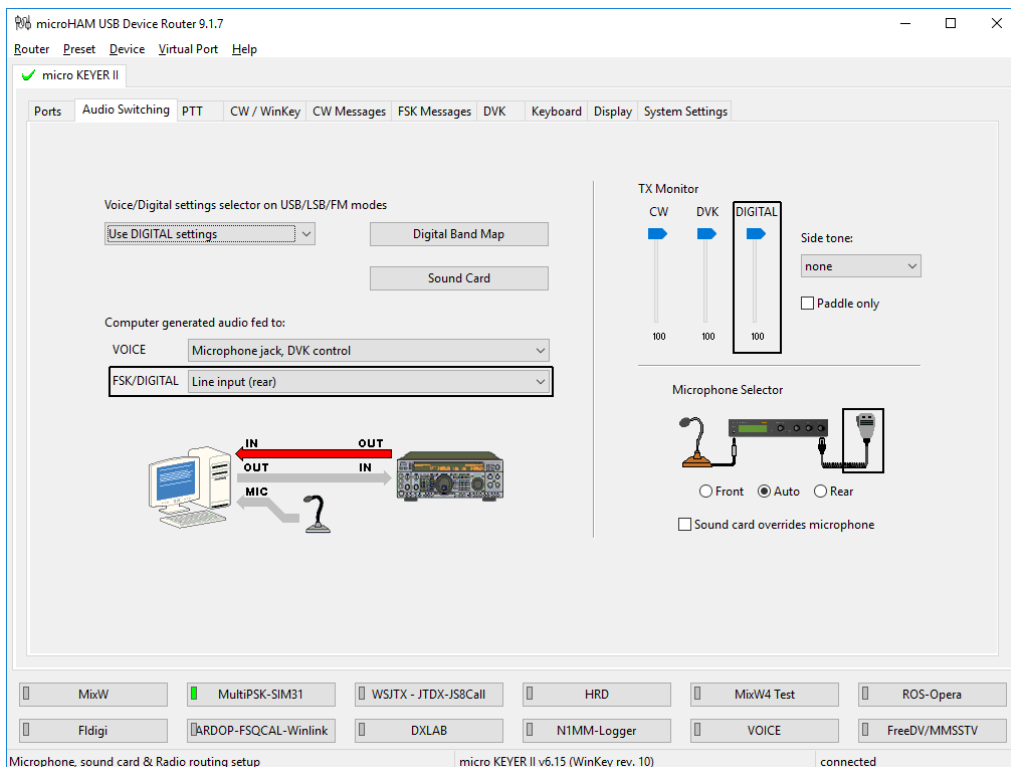
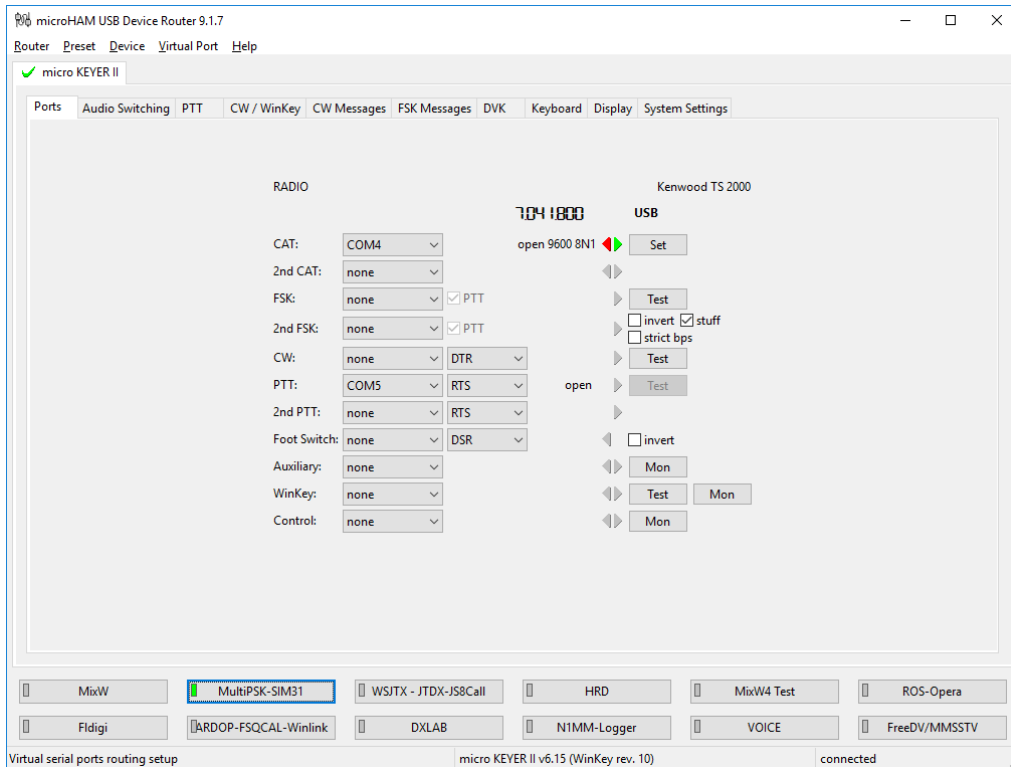
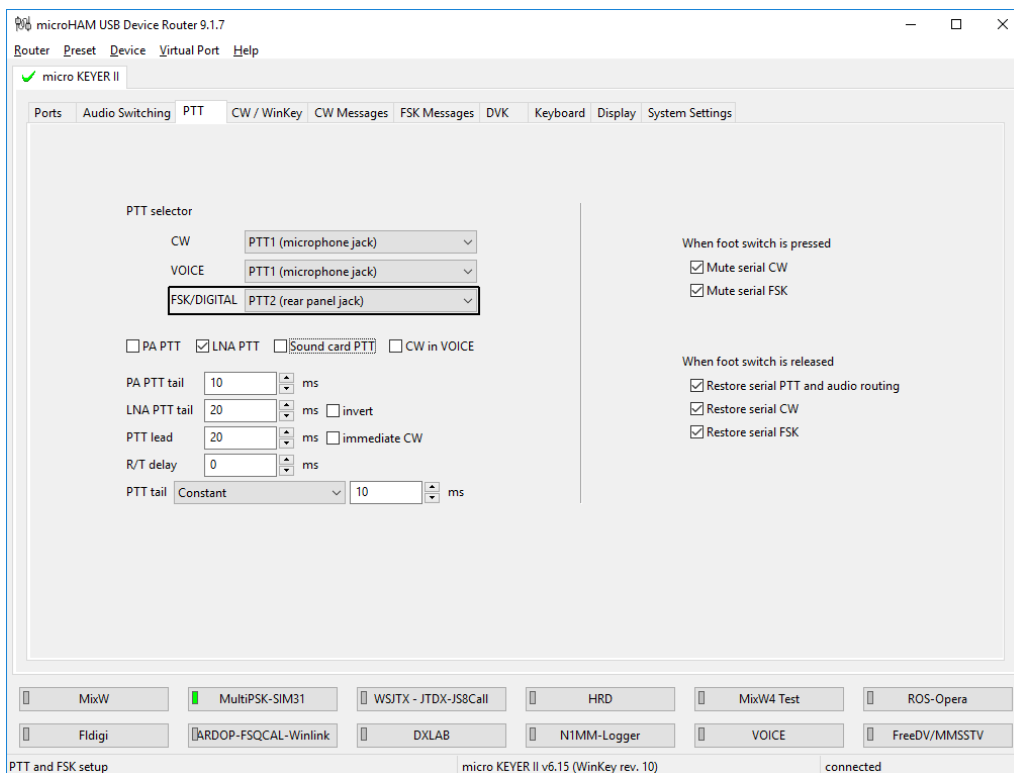


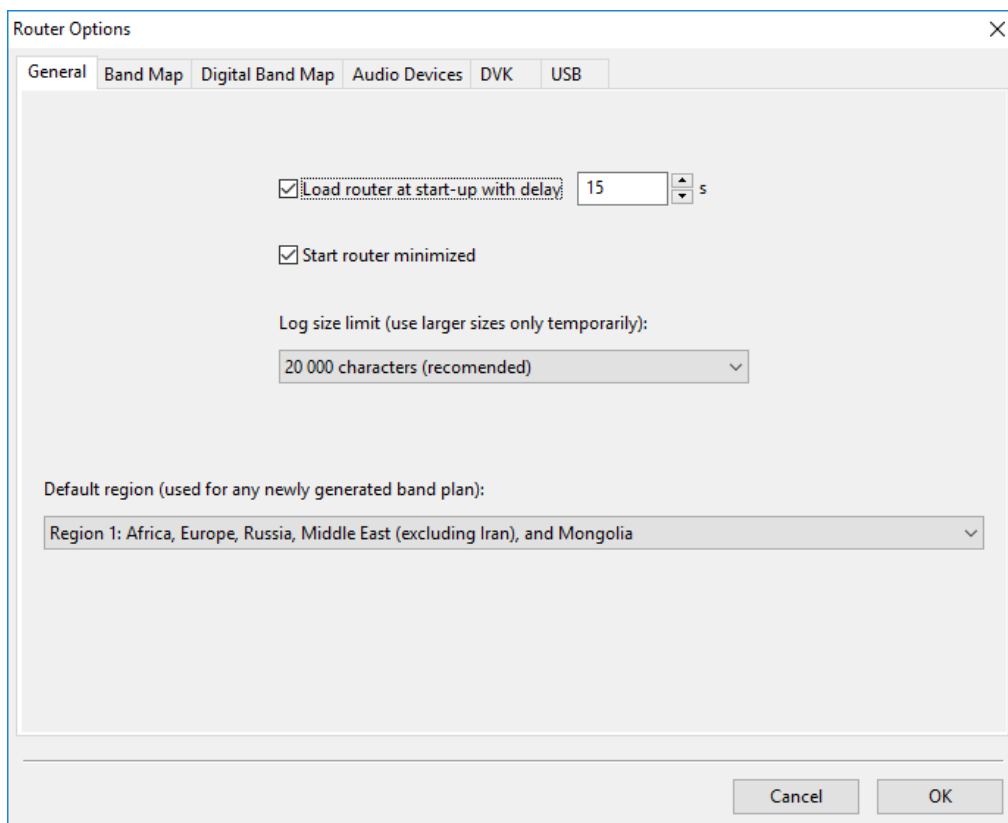
MultiPSK – microHAM micro KEYER II and DXLab Suite (Commander, DXKeeper, Spotcollector, DXView, Pathfinder)

In the microHAM USB Router go to the menu “Virtual Port” click on “Create Port” and now select some ports. I have selected 16 COM ports.



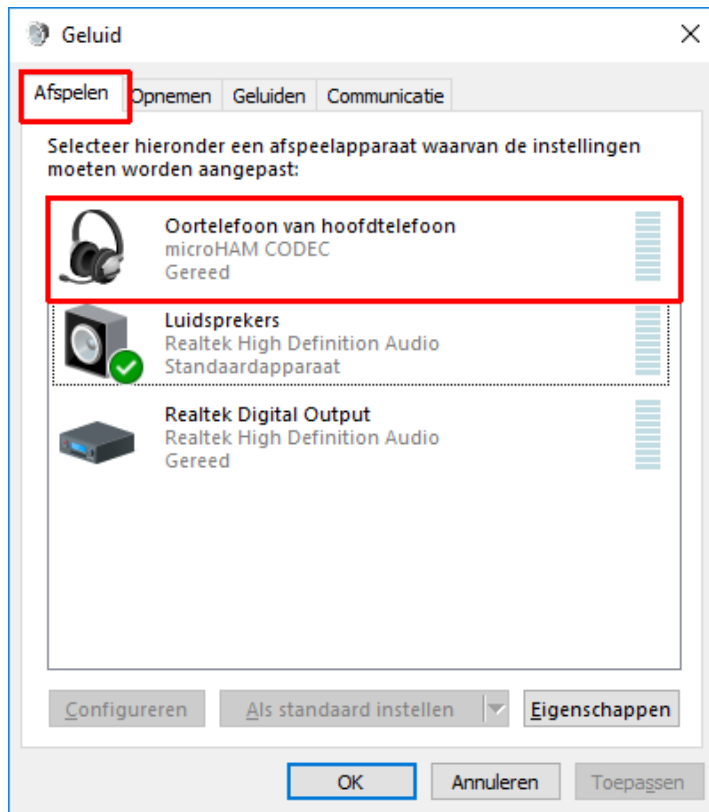


Go to menu Router – Options and enable
 Load router at start-up with delay
 and
 Start router minimized and select your Region see below image



Do not forget to create a backup of this settings in a safe folder
 For a backup goes to Menu Router and select Backup Router Settings and name this file “YourTRCVR-MicroKeyerII-Backup.urs” in my case I use a TS-2000 with the micro KEYER II I named this file: TS-2000-MicroKeyerII-Backup.urs

Open your Configuration screen and select the Sound setup and select like in image



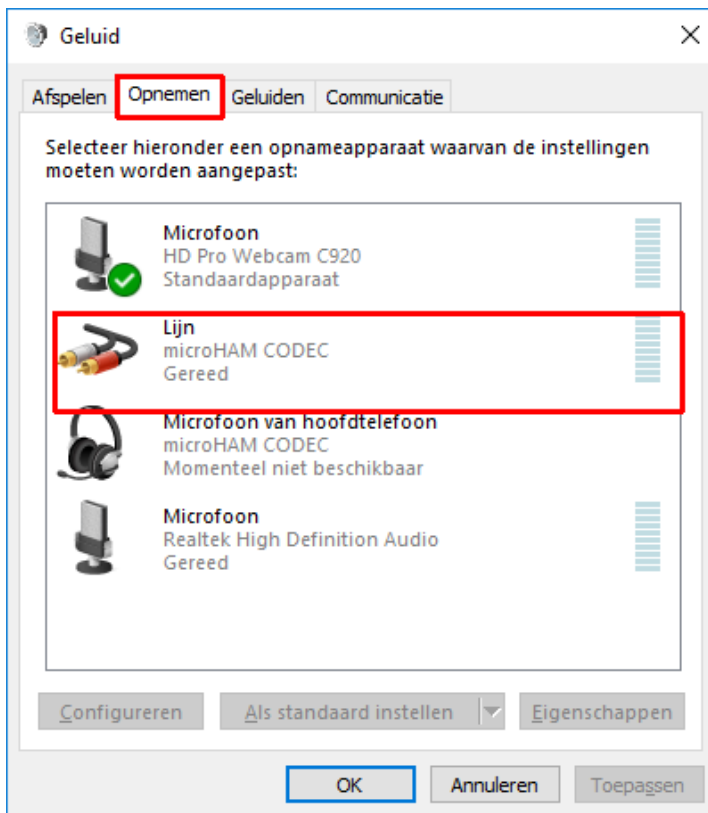
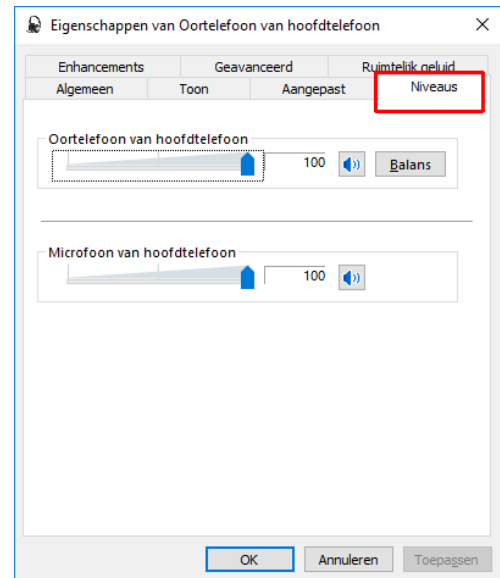
Do **NOT** select your microHAM CODEC as your:

Set as the default device

Or as your:

Set as the default communication device

Twice click on the microHAM CODEC open a new window like below And set all on 100% and click OK



Now click on the next menu

Do **NOT** select your microHAM CODEC as your:

Set as the default device

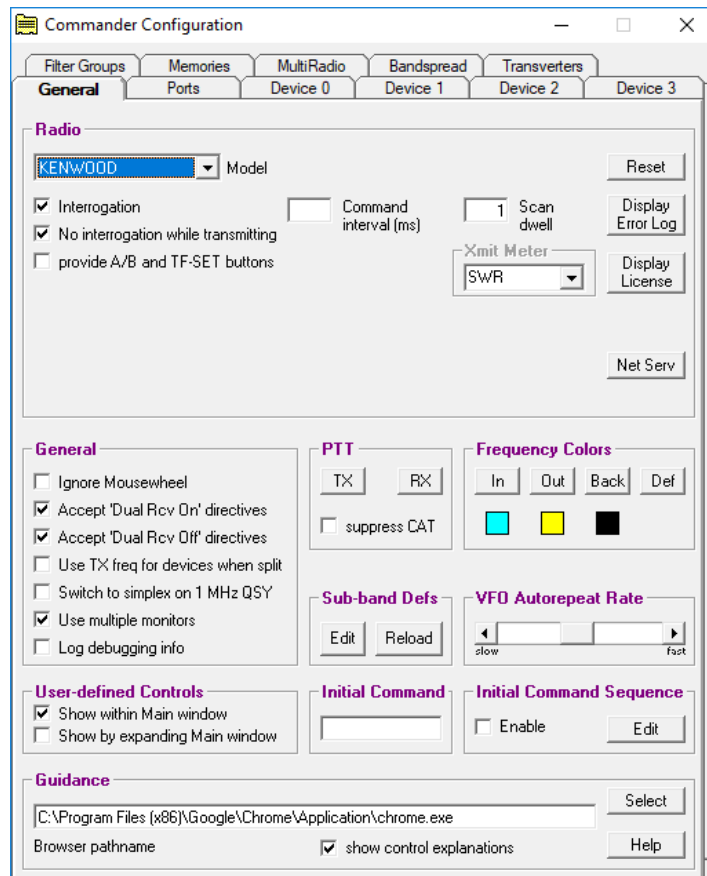
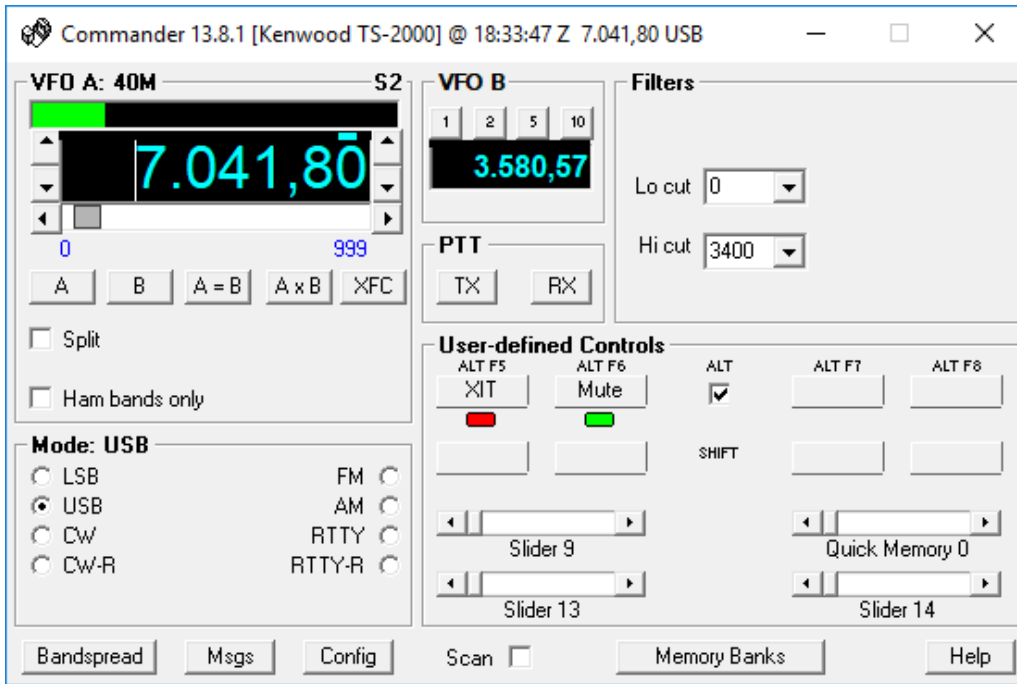
Or as your:

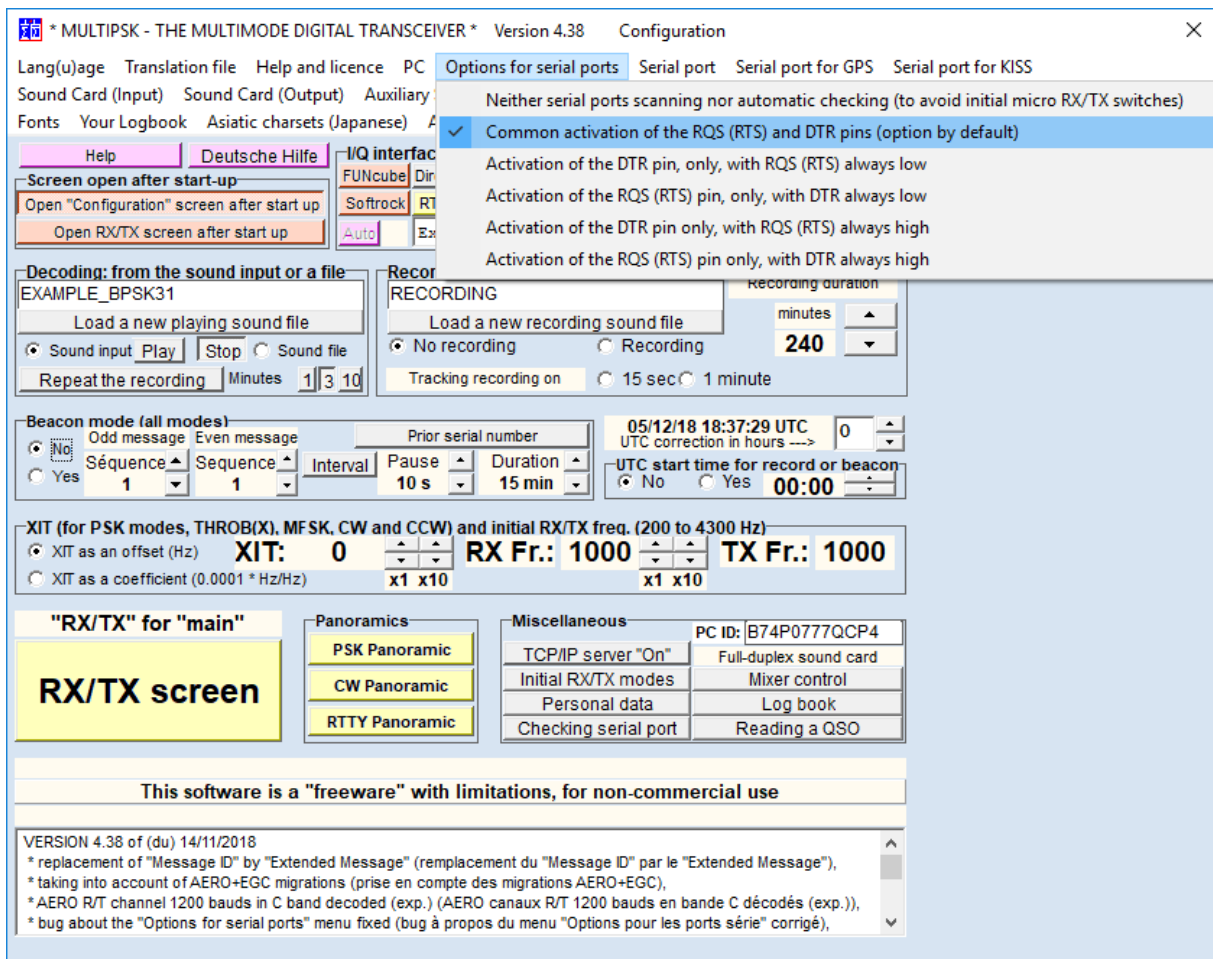
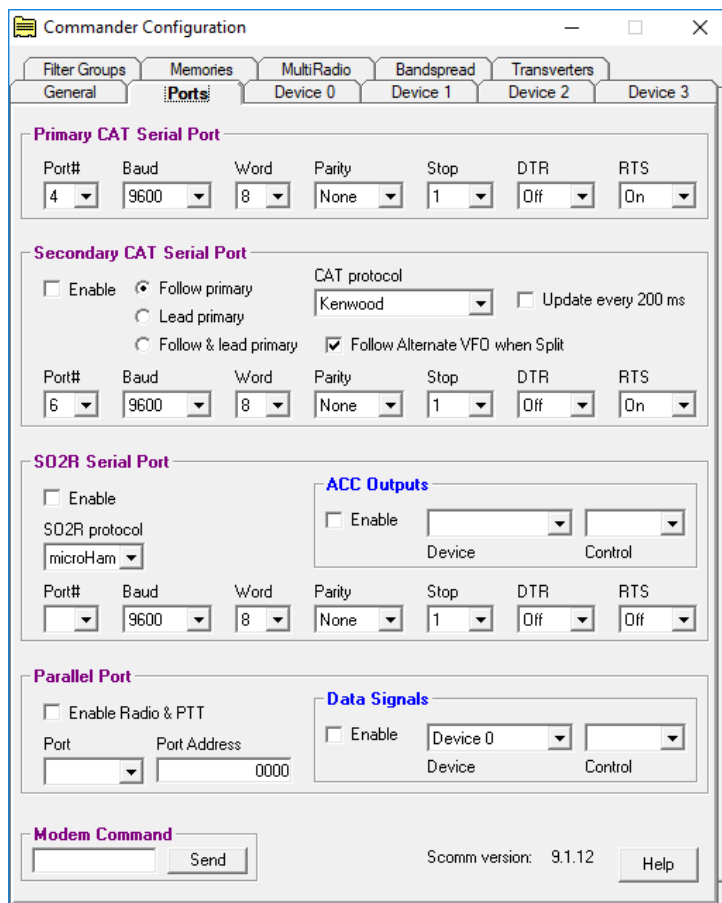
Set as the default communication device

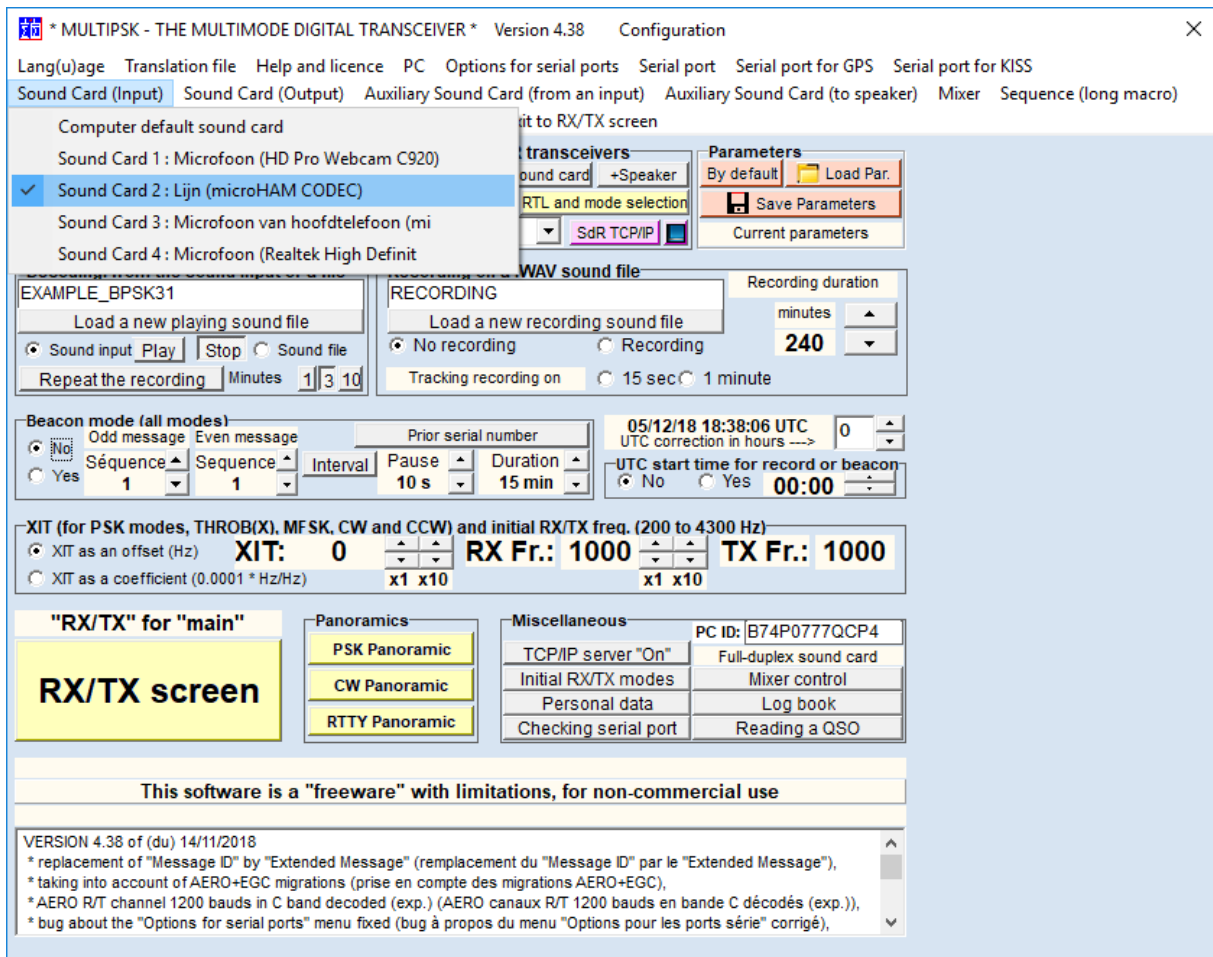
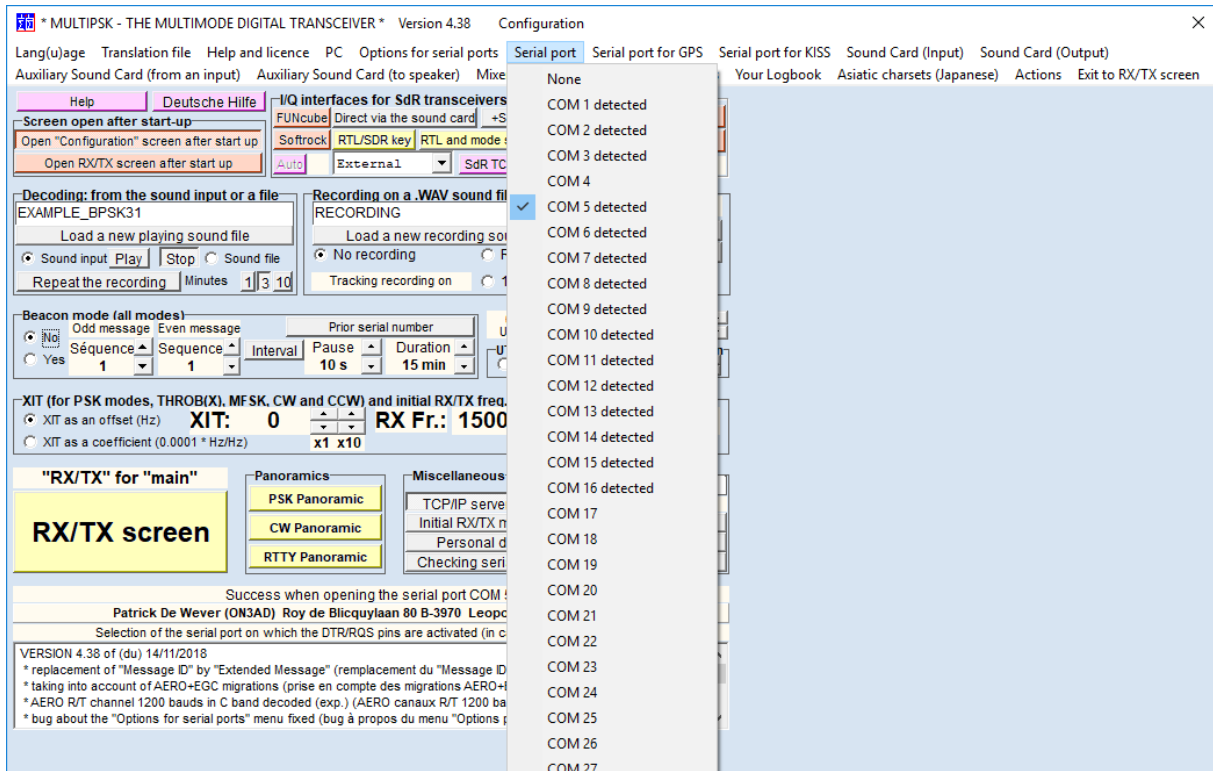
Twice click on the microHAM CODEC open a new window like below And set all on 100% and click OK

Do the same with the second microHAM CODEC

Known that this soundsetting can changed by some updates or programs. Also if you haven't Out- or Input, control this first.







* MULTIPSK - THE MULTIMODE DIGITAL TRANSCEIVER * Version 4.38 Configuration

Lang(u)age Translation file Help and licence PC Options for serial ports Serial port Serial port for GPS Serial port for KISS
 Sound Card (Input) Sound Card (Output) Auxiliary Sound Card (from an input) Auxiliary Sound Card (to speaker) Mixer Sequence (long macro)
 Fonts Your Logbook

Help Same sound card as for the input
 Screen open after Sound Card 1 : Luidsprekers (Realtek High Defi
 Open "Configuration" Sound Card 2 : Realtek Digital Output (Realtek
 Open RX/TX scre Sound Card 3 : Oortelefoon van hoofdtelefoon (

Parameters
 By default Load Par.
 Save Parameters
 Current parameters

Decoding: from the sound input or a file
 EXAMPLE_BPSK31
 Load a new playing sound file
 Sound input Play Stop Sound file
 Repeat the recording Minutes 1 3 10

Recording on a .WAV sound file
 RECORDING
 Load a new recording sound file
 Recording duration minutes 240
 No recording Recording
 Tracking recording on 15 sec 1 minute

Beacon mode (all modes)
 Odd message Even message Prior serial number 05/12/18 18:38:42 UTC
 UTC correction in hours ---> 0
 Séquence 1 Séquence 1 Interval 10 s Duration 15 min
 UTC start time for record or beacon
 No Yes 00:00

XIT (for PSK modes, THROB(X), MFSK, CW and CCW) and initial RX/TX freq. (200 to 4300 Hz)
 XIT as an offset (Hz) XIT: 0 RX Fr.: 1000 TX Fr.: 1000
 XIT as a coefficient (0.0001 * Hz/Hz) x1 x10 x1 x10

"RX/TX" for "main"
 RX/TX screen

Panoramics
 PSK Panoramic
 CW Panoramic
 RTTY Panoramic

Miscellaneous
 PC ID: B74P0777QCP4
 TCP/IP server "On" Full-duplex sound card
 Initial RX/TX modes Mixer control
 Personal data Log book
 Checking serial port Reading a QSO

This software is a "freeware" with limitations, for non-commercial use

VERSION 4.38 of (du) 14/11/2018
 * replacement of "Message ID" by "Extended Message" (remplacement du "Message ID" par le "Extended Message"),
 * taking into account of AERO+EGC migrations (prise en compte des migrations AERO+EGC),
 * AERO R/T channel 1200 bauds in C band decoded (exp.) (AERO canaux R/T 1200 bauds en bande C décodés (exp.)),
 * bug about the "Options for serial ports" menu fixed (bug à propos du menu "Options pour les ports série" corrigé),

* MULTIPSK - THE MULTIMODE DIGITAL TRANSCEIVER * Version 4.38 Configuration

Lang(u)age Translation file Help and licence PC Options for serial ports Serial port Serial port for GPS Serial port for KISS
 Sound Card (Input) Sound Card (Output) Auxiliary Sound Card (from an input) Auxiliary Sound Card (to speaker) Mixer Sequence (long macro)
 Fonts Your Logbook Asiatic charsets (Jap

Help Deutsche Hilfe
 Screen open after start-up
 Open "Configuration" screen after start up
 Open RX/TX screen after start up

Sound Card 1 : Microfoon (HD Pro Webcam C920)
 Sound Card 2 : Lijn (microHAM CODEC)
 Sound Card 3 : Microfoon van hoofdtelefoon (mi
 Sound Card 4 : Microfoon (Realtek High Definit

Parameters
 Load Par.
 Save Parameters
 Current parameters

Decoding: from the sound input or a file
 EXAMPLE_BPSK31
 Load a new playing sound file
 Sound input Play Stop Sound file
 Repeat the recording Minutes 1 3 10

Recording on a .WAV sound file
 RECORDING
 Load a new recording sound file
 Recording duration minutes 240
 No recording Recording
 Tracking recording on 15 sec 1 minute

Beacon mode (all modes)
 Odd message Even message Prior serial number 05/12/18 18:39:05 UTC
 UTC correction in hours ---> 0
 Séquence 1 Séquence 1 Interval 10 s Duration 15 min
 UTC start time for record or beacon
 No Yes 00:00

XIT (for PSK modes, THROB(X), MFSK, CW and CCW) and initial RX/TX freq. (200 to 4300 Hz)
 XIT as an offset (Hz) XIT: 0 RX Fr.: 1000 TX Fr.: 1000
 XIT as a coefficient (0.0001 * Hz/Hz) x1 x10 x1 x10

"RX/TX" for "main"
 RX/TX screen

Panoramics
 PSK Panoramic
 CW Panoramic
 RTTY Panoramic

Miscellaneous
 PC ID: B74P0777QCP4
 TCP/IP server "On" Full-duplex sound card
 Initial RX/TX modes Mixer control
 Personal data Log book
 Checking serial port Reading a QSO

This software is a "freeware" with limitations, for non-commercial use

VERSION 4.38 of (du) 14/11/2018
 * replacement of "Message ID" by "Extended Message" (remplacement du "Message ID" par le "Extended Message"),
 * taking into account of AERO+EGC migrations (prise en compte des migrations AERO+EGC),
 * AERO R/T channel 1200 bauds in C band decoded (exp.) (AERO canaux R/T 1200 bauds en bande C décodés (exp.)),
 * bug about the "Options for serial ports" menu fixed (bug à propos du menu "Options pour les ports série" corrigé),

* MULTIPSK - THE MULTIMODE DIGITAL TRANSCEIVER * Version 4.38 Configuration

Lang(u)age Translation file Help and licence PC Options for serial ports Serial port Serial port for GPS Serial port for KISS
 Sound Card (Input) Sound Card (Output) Auxiliary Sound Card (from an input) Auxiliary Sound Card (to speaker) Mixer Sequence (long macro)
 Fonts Your Logbook Asiatic charsets (Japanese) Actions Exit to RX/TX screen

Help Deutsche Hilfe I/Q interfaces for SdR transceivers
 FUNcube Direct via the sound card +Spear
 Softrock RTL/SDR key RTL and mode sele

Screen open after start-up
 Open "Configuration" screen after start up
 Open RX/TX screen after start up

Auto External SdR TCP/IP Current parameters

Decoding: from the sound input or a file
 EXAMPLE_BPSK31
 Load a new playing sound file
 Sound input Play Stop Sound file
 Repeat the recording Minutes 1 3 10

Recording on a .WAV sound file
 RECORDING
 Load a new recording sound file
 No recording Recording
 Recording duration minutes 240
 Tracking recording on 15 sec 1 minute

Beacon mode (all modes)
 Odd message Even message
 No Yes
 Séquence Sequence Interval Pause Duration
 1 1 10 s 15 min
 05/12/18 18:39:26 UTC
 UTC correction in hours
 No Yes 00:00

XIT (for PSK modes, THROB(X), MFSK, CW and CCW) and initial RX/TX freq. (200 to 4300 Hz)
 XIT as an offset (Hz) XIT: 0 RX Fr.: 1000 TX Fr.: 1000
 XIT as a coefficient (0.0001 * Hz/Hz) x1 x10 x1 x10

"RX/TX" for "main"
 RX/TX screen

Panoramics
 PSK Panoramic
 CW Panoramic
 RTTY Panoramic

Miscellaneous
 PC ID: B74P0777QCP4
 TCP/IP server "On" Full-duplex sound card
 Initial RX/TX modes Mixer control
 Personal data Log book
 Checking serial port Reading a QSO

This software is a "freeware" with limitations, for non-commercial use

VERSION 4.38 of (du) 14/11/2018
 * replacement of "Message ID" by "Extended Message" (remplacement du "Message ID" par le "Extended Message"),
 * taking into account of AERO+EGC migrations (prise en compte des migrations AERO+EGC),
 * AERO R/T channel 1200 bauds in C band decoded (exp.) (AERO canaux R/T 1200 bauds en bande C décodés (exp.)),
 * bug about the "Options for serial ports" menu fixed (bug à propos du menu "Options pour les ports série" corrigé),

* MULTIPSK - THE MULTIMODE DIGITAL TRANSCEIVER * Version 4.38 Configuration

Lang(u)age Translation file Help and licence PC Options for serial ports Serial port Serial port for GPS Serial port for KISS Sound Card (Input) Sound Card (Output)
 Auxiliary Sound Card (from an input) Auxiliary Sound Card (to speaker) Mixer Sequence (long macro) Fonts Your Logbook Asiatic charsets (Japanese) Actions
 Exit to RX/TX screen

Help Deutsche Hilfe I/Q interfaces for SdR transceivers
 FUNcube Direct via the sound card
 Softrock RTL/SDR key RTL and mode sele

Screen open after start-up
 Open "Configuration" screen after start up
 Open RX/TX screen after start up

Auto External SdR TCP/IP Current parameters

Decoding: from the sound input or a file
 EXAMPLE_BPSK31
 Load a new playing sound file
 Sound input Play Stop Sound file
 Repeat the recording Minutes 1 3 10

Recording on a .WAV sound file
 RECORDING
 Load a new recording sound file
 No recording Recording
 Recording duration minutes 240
 Tracking recording on 15 sec 1 minute

Beacon mode (all modes)
 Odd message Even message
 No Yes
 Séquence Sequence Interval Pause Duration
 1 1 10 s 15 min
 07/12/18 11:09:02 UTC
 UTC correction in hours
 No Yes 00:00

XIT (for PSK modes, THROB(X), MFSK, CW and CCW) and initial RX/TX freq. (200 to 4300 Hz)
 XIT as an offset (Hz) XIT: 0 RX Fr.: 1000 TX Fr.: 1000
 XIT as a coefficient (0.0001 * Hz/Hz) x1 x10 x1 x10

"RX/TX" for "main"
 RX/TX screen

Panoramics
 PSK Panoramic
 CW Panoramic
 RTTY Panoramic

Miscellaneous
 PC ID: B74P0777QCP4
 TCP/IP server "On" Full-duplex sound card
 Initial RX/TX modes Mixer control
 Personal data Log book
 Checking serial port Reading a QSO

This software is a "freeware" with limitations, for non-commercial use
 Software adjustment of the mixer (Sound Input, Input level and Speaker out) or user adjustment

VERSION 4.38 of (du) 14/11/2018
 * replacement of "Message ID" by "Extended Message" (remplacement du "Message ID" par le "Extended Message"),
 * taking into account of AERO+EGC migrations (prise en compte des migrations AERO+EGC),
 * AERO R/T channel 1200 bauds in C band decoded (exp.) (AERO canaux R/T 1200 bauds en bande C décodés (exp.)),
 * bug about the "Options for serial ports" menu fixed (bug à propos du menu "Options pour les ports série" corrigé),

MULTIPSK V. 4.38 RX/TX screen * MULTIPSK - THE MULTIMODE DIGITAL TRANSCEIVER * Version 4.38

Configuration Adjustments Options Tools PSKReporter Satellites Panoramic Help

TCP/IP Sdr spectrum Transceiver Country/Loc World QSO Mail Tune Beacon ID CPU Level: 29%

Where? Number? Search Look-up DXView Pathfinder Where? -> PSKReporter Options are in the logbook

2 Call Name Freq Mhz Mode Ur RST My RST R S Locator QTH Notes Clear Logbook QSO-> Log

UZ4E 7.041800 BPSK 599 599 Ordzhonikid Cluster L A DXKeeper Conf F

EM RX/TX

Call ID RS ID Video ID ORG RX RS ID RX Call ID Panoramic 0 bauds Mode Slave Master Doppler

TX: BPSK31 MODE RX: BPSK31 Auto mode

TX frequency RX frequency Fr. difference Squelch IMD Quality S/N

999.5 Hz 999.5 Hz 0.0 Hz 0 F -1/5 -30 dB

200 500 1000 1500 2000 2500 Professional modes Spectrum Waterfall High

M1 M2 Go M1 Go M2 More

<< >> XT Rewind

Band KHz (450-4)

Lock 2.5 3.3 4.3

Color AGC Grey Frequency

Call 1 F1 CO F2 Call 3 F3 Answer F4 BTU F5 Signoff F6 TX F7 RX F8 RX time + callion + mode

Set 2 Sets File Macros Clear Repeat UTC T/R F9 Info F10 CW end/fin CW answer

oe w'ee= i tre.o.ll elp=eo e
troen4tdp9eyWpæaa e ottee 2e
a tu 6 d itoa
i ièeeUn efei ntcoe

Enabled this

Commander is Connected

109 Auto RX/Auto TX TX STOP RX 05/12/18 18:40:09 UTC SpotC. Off Connected