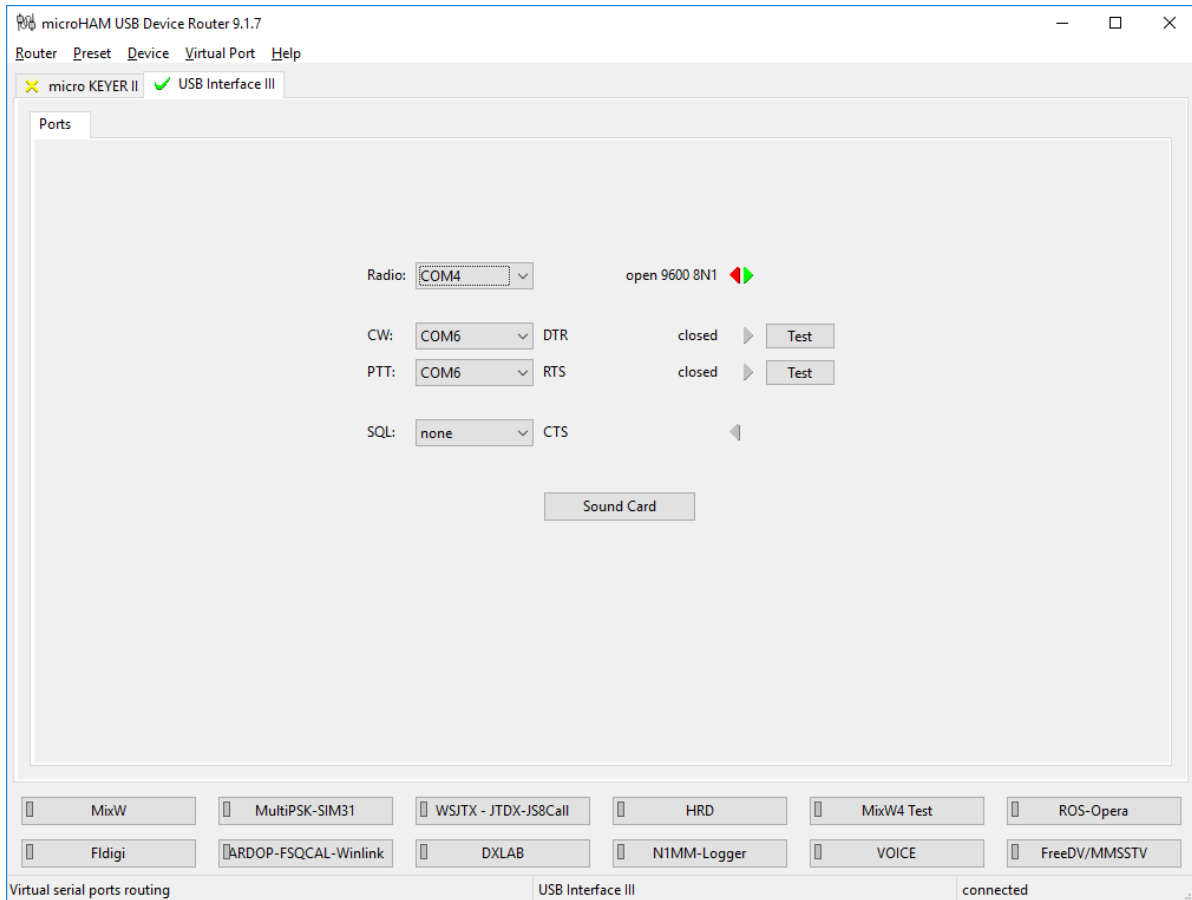
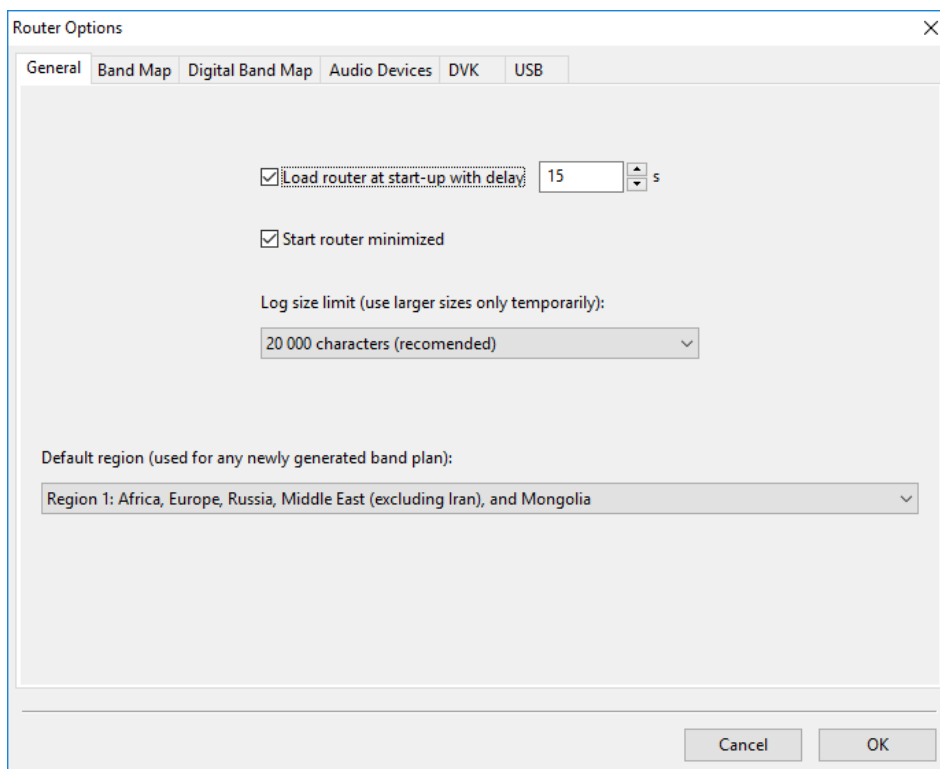


MultiPSK – USB Interface III and DXLab Suite
(Commander, DXKeeper, Spotcollector, DXView, Pathfinder)

In the microHAM USB Router go to the menu “Virtual Port” click on “Create Port” and now select some ports. I have selected 16 COM ports.



Go to menu Router – Options and enable
Load router at start-up with delay
and
Start router minimized and select your Region see below image

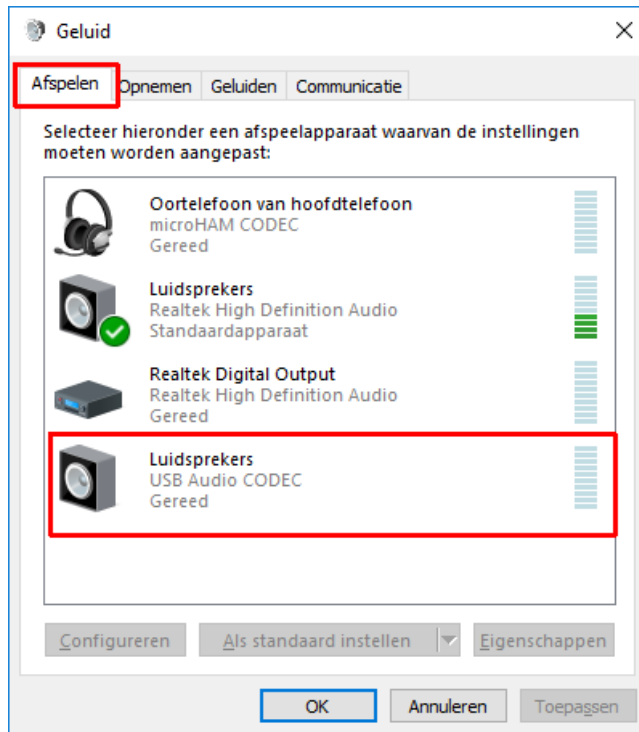


Do not forget to create a backup of this settings in a safe folder

For a backup goes to Menu Router and select Backup Router Settings and name this file "YourTRCVR-USB3-Backup.urs" in my case I use a IC-703 with the USB Interface III, I name this file:

IC-703-USBIII-Backup.urs

In Windows open your Configuration screen and select the Sound setup and select like in image



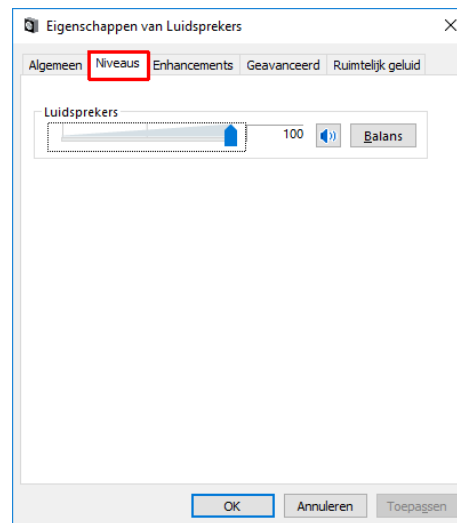
Do **NOT** select your USB Audio CODEC as your:

Set as the default device

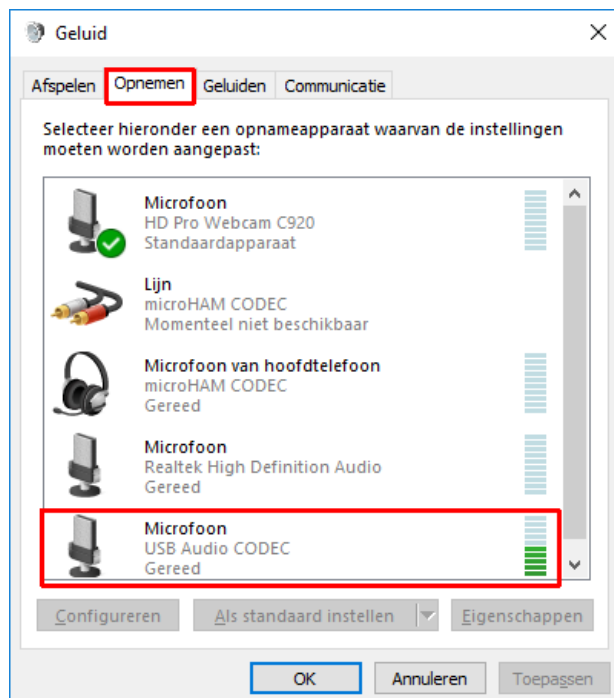
Or as your:

Set as the default communication device

Twice click on the microHAM CODEC open a new window like below



And set all on 100% and click OK



Now click on the next menu

Do **NOT** select your USB Audio CODEC as your:

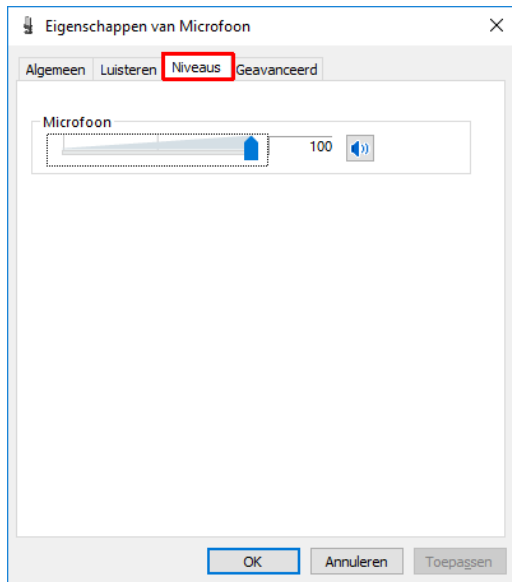
Set as the default device

Or as your:

Set as the default communication device

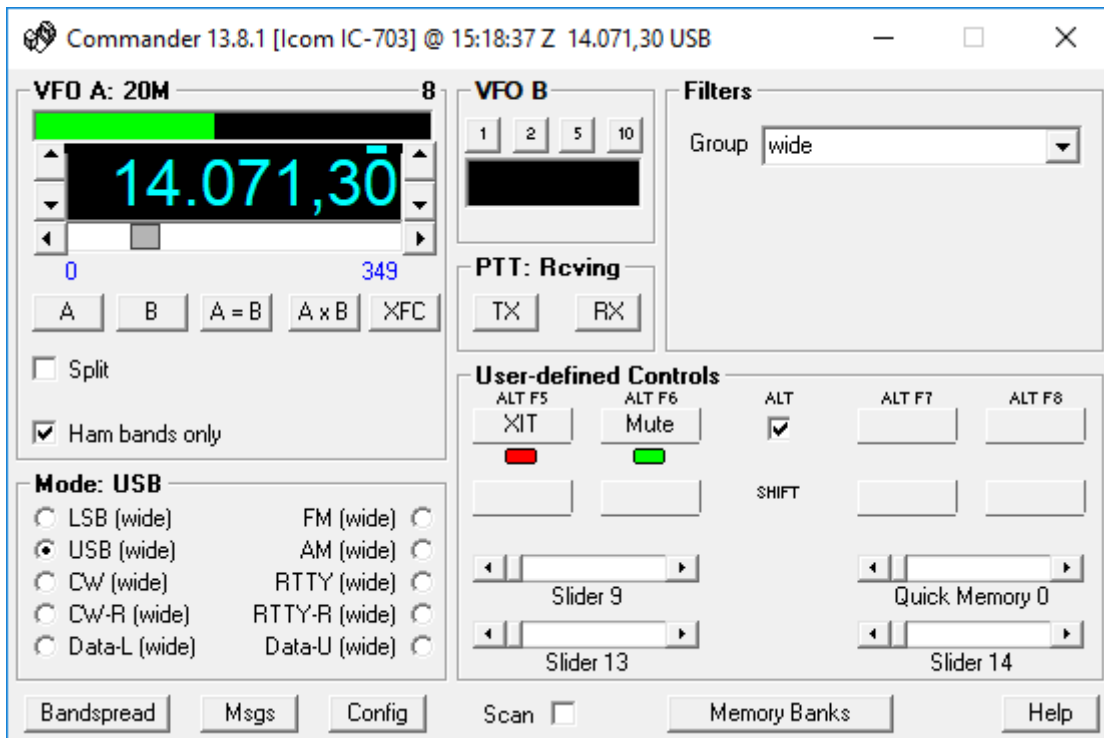
Twice click on the USB Audio CODEC open a new window like in the image

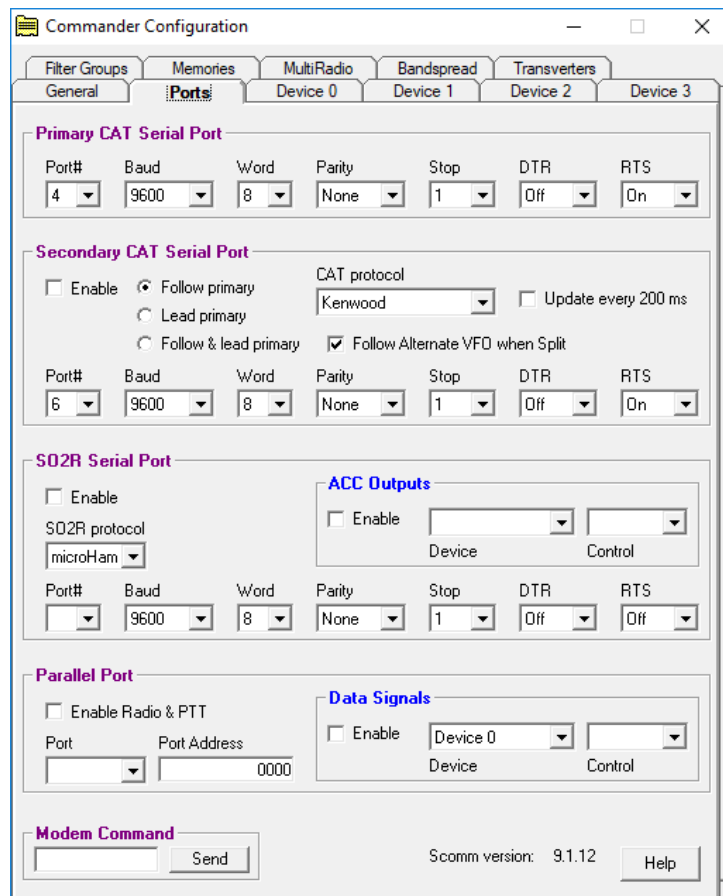
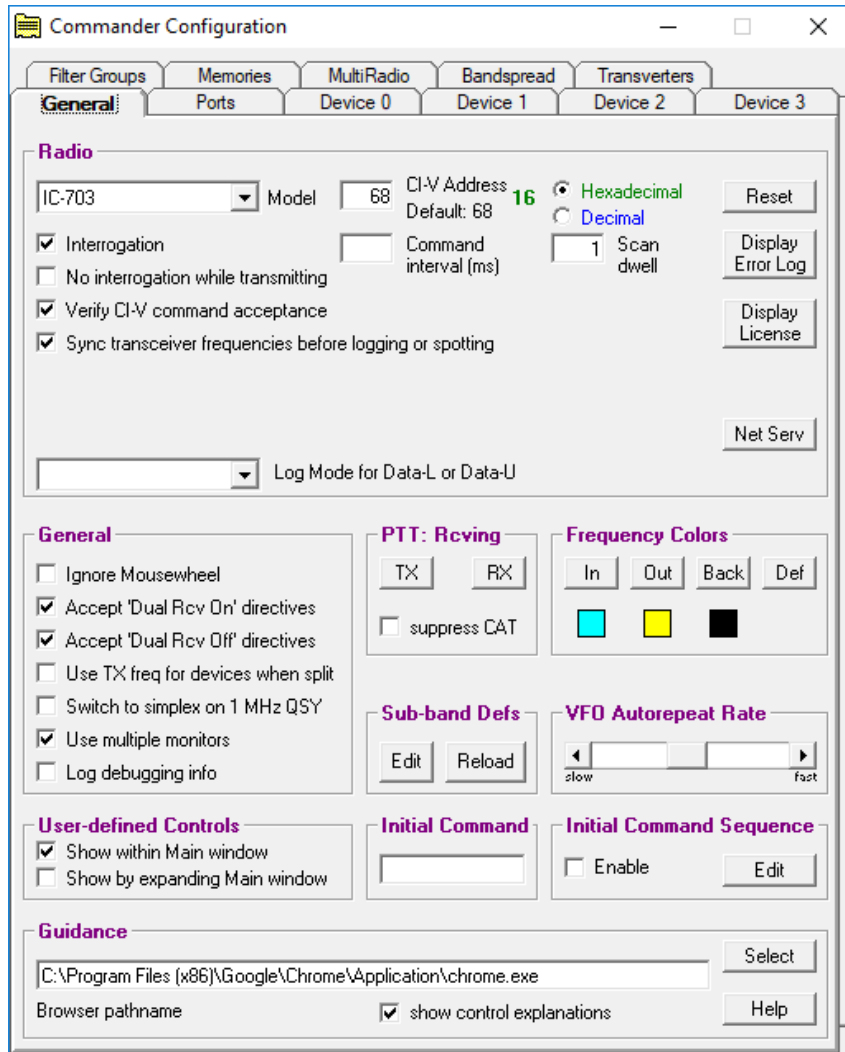
And set all on 100% and click OK

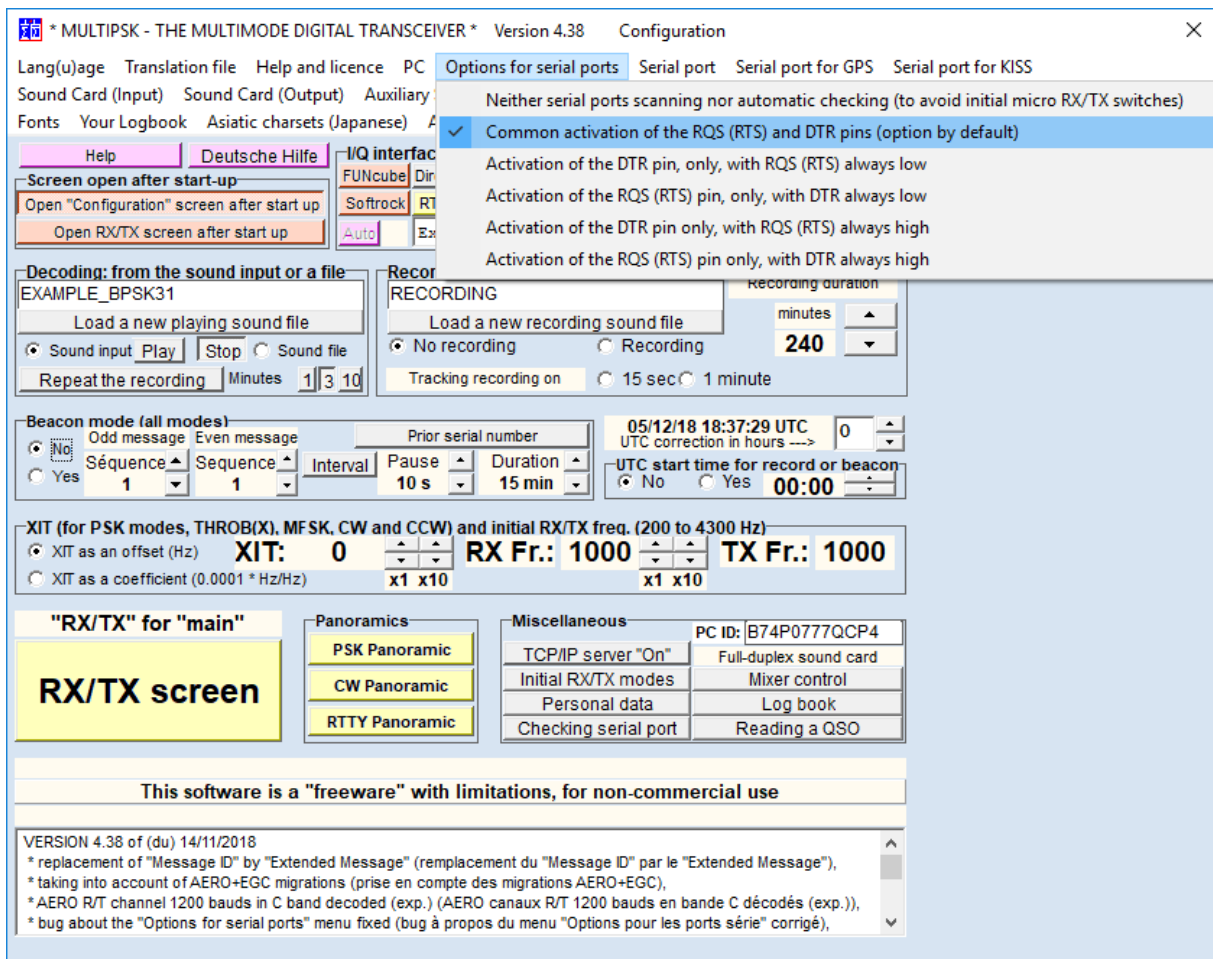
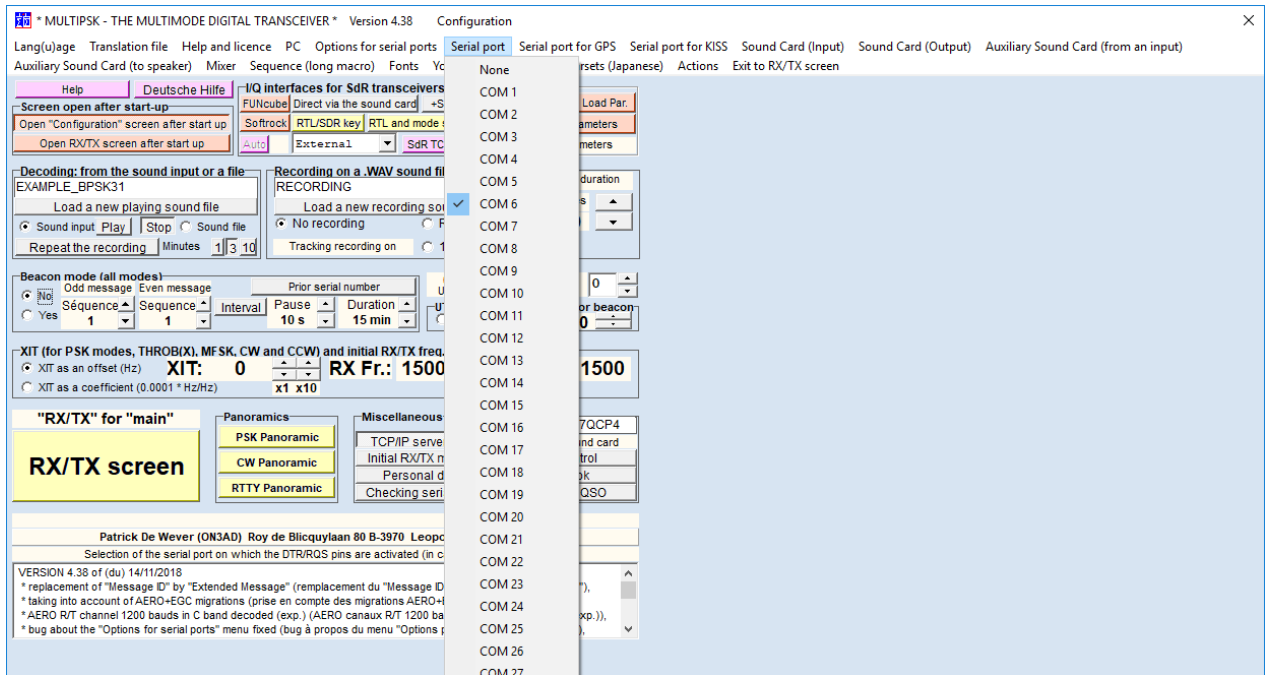


Known that this sound settings can be changed by some updates or other programs.

Also if you haven't Out- or Input, control this first.







MULTIPSK - THE MULTIMODE DIGITAL TRANSCEIVER * Version 4.38 Configuration

Lang(u)age Translation file Help and licence PC Options for serial ports Serial port Serial port for GPS Serial port for KISS
 Auxiliary Sound Card (from an input) Auxiliary Sound Card (to speaker) Mixer Sequence (long macro) Fonts Your Logbook
 Exit to RX/TX screen

Help Deutsche Hilfe

Screen open after start-up
 Open "Configuration" screen after start up
 Open RX/TX screen after start up

I/Q interfaces for SdR transceivers
 FUNcube Direct via the sound card +Speaker
 Softrock RTL/SDR key RTL and mode selection
 Auto External SdR TCP/IP

Parameters
 By default Load Par.
 Save Parameters
 Current parameters

Decoding: from the sound input or a file
 EXAMPLE_BPSK31
 Load a new playing sound file
 Sound input Play Stop Sound file
 Repeat the recording Minutes 1 3 10

Recording on a .WAV sound file
 RECORDING
 Load a new recording sound file
 No recording Recording
 Tracking recording on 15 sec 1 minute
 Recording duration minutes 240

Beacon mode (all modes)
 Odd message Even message
 Sequence Sequence Interval Pause Duration
 Yes 1 1 10 s 15 min
 08/12/18 15:26:09 UTC
 UTC correction in hours 0
 UTC start time for record or beacon
 No Yes 00:00

XIT (for PSK modes, THROB(X), MFSK, CW and CCW) and initial RX/TX freq. (200 to 4300 Hz)
 XIT as an offset (Hz) XIT: 0 RX Fr.: 1500 TX Fr.: 1500
 XIT as a coefficient (0.0001 * Hz/Hz) x1 x10 x1 x10

"RX/TX" for "main"
RX/TX screen

Panoramics
 PSK Panoramic
 CW Panoramic
 RTTY Panoramic

Miscellaneous
 TCP/IP server "On" Full-duplex sound card
 Initial RX/TX modes Mixer control
 Personal data Log book
 Checking serial port Reading a QSO

PC ID: B74P0777QCP4

Patrick De Wever (ON3AD) Roy de Blicquy laan 80 B-3970 Leopoldsburg Belgium

Selection of the sound card in input.

VERSION 4.38 of (du) 14/11/2018
 * replacement of "Message ID" by "Extended Message" (remplacement du "Message ID" par le "Extended Message"),
 * taking into account of AERO+EGC migrations (prise en compte des migrations AERO+EGC),
 * AERO R/T channel 1200 bauds in C band decoded (exp.) (AERO canaux R/T 1200 bauds en bande C décodés (exp.)),
 * bug about the "Options for serial ports" menu fixed (bug à propos du menu "Options pour les ports série" corrigé).

Sound Card (Input) Sound Card (Output)

- Computer default sound card
- Sound Card 1 : Microfoon (HD Pro Webcam C)
- Sound Card 2 : Microfoon (USB Audio CODEC)
- Sound Card 3 : Lijn (microHAM CODEC)
- Sound Card 4 : Microfoon van hoofdtelefoon
- Sound Card 5 : Microfoon (Realtek High Defir)

MULTIPSK - THE MULTIMODE DIGITAL TRANSCEIVER * Version 4.38 Configuration

Lang(u)age Translation file Help and licence PC Options for serial ports Serial port Serial port for GPS Serial port for KISS
 Sound Card (Input) Sound Card (Output) Auxiliary Sound Card (from an input) Auxiliary Sound Card (to speaker) Mixer Sequence (long macro)
 Fonts Your Logbook

Help

Screen open after
 Open "Configuration"
 Open RX/TX scre

Same sound card as for the input
 Sound Card 1 : Luidsprekers (Realtek High Defi
 Sound Card 2 : Realtek Digital Output (Realtek
 Sound Card 3 : Oortelefoon van hoofdtelefoon (

Parameters
 By default Load Par.
 Save Parameters
 Current parameters

Decoding: from the sound input or a file
 EXAMPLE_BPSK31
 Load a new playing sound file
 Sound input Play Stop Sound file
 Repeat the recording Minutes 1 3 10

Recording on a .WAV sound file
 RECORDING
 Load a new recording sound file
 No recording Recording
 Tracking recording on 15 sec 1 minute
 Recording duration minutes 240

Beacon mode (all modes)
 Odd message Even message
 Sequence Sequence Interval Pause Duration
 Yes 1 1 10 s 15 min
 05/12/18 18:38:42 UTC
 UTC correction in hours 0
 UTC start time for record or beacon
 No Yes 00:00

XIT (for PSK modes, THROB(X), MFSK, CW and CCW) and initial RX/TX freq. (200 to 4300 Hz)
 XIT as an offset (Hz) XIT: 0 RX Fr.: 1000 TX Fr.: 1000
 XIT as a coefficient (0.0001 * Hz/Hz) x1 x10 x1 x10

"RX/TX" for "main"
RX/TX screen

Panoramics
 PSK Panoramic
 CW Panoramic
 RTTY Panoramic

Miscellaneous
 TCP/IP server "On" Full-duplex sound card
 Initial RX/TX modes Mixer control
 Personal data Log book
 Checking serial port Reading a QSO

PC ID: B74P0777QCP4

This software is a "freeware" with limitations, for non-commercial use

VERSION 4.38 of (du) 14/11/2018
 * replacement of "Message ID" by "Extended Message" (remplacement du "Message ID" par le "Extended Message"),
 * taking into account of AERO+EGC migrations (prise en compte des migrations AERO+EGC),
 * AERO R/T channel 1200 bauds in C band decoded (exp.) (AERO canaux R/T 1200 bauds en bande C décodés (exp.)),
 * bug about the "Options for serial ports" menu fixed (bug à propos du menu "Options pour les ports série" corrigé).

MULTIPSK - THE MULTIMODE DIGITAL TRANSCEIVER * Version 4.38 Configuration

Lang(u)age Translation file Help and licence PC Options for serial ports Serial port Serial port for GPS Serial port for KISS Sound Card (Input) Sound Card (Output)

Auxiliary Sound Card (from an input) Auxiliary Sound Card (to speaker) Mixer Sequence (long macro) Fonts Your Logbook Asiatic charsets (Japanese) Actions Exit to RX/TX screen

Sound Card 1: Microfoon (HD Pro Webcam C920)

Sound Card 2: Microfoon (USB Audio CODEC)

Sound Card 3: Lijn (microHAM CODEC)

Sound Card 4: Microfoon van hoofdtelefoon (mi)

Sound Card 5: Microfoon (Realtek High Definit)

transceivers
Sound card: +Speaker
By default Load Par.
Save Parameters
Current parameters

WAV sound file
Recording duration
minutes
240

Load a new playing sound file
Load a new recording sound file
No recording Recording
Tracking recording on 15 sec 1 minute

Beacon mode (all modes)
Odd message Even message Prior serial number
08/12/18 15:27:05 UTC 0
UTC correction in hours -->
Sequence Sequence Interval Pause Duration
1 1 10 s 15 min
UTC start time for record or beacon
No Yes 00:00

XIT (for PSK modes, THROB(X), MFSK, CW and CCW) and initial RX/TX freq. (200 to 4300 Hz)
XIT as an offset (Hz) XIT: 0 RX Fr.: 1500 TX Fr.: 1500
XIT as a coefficient (0.0001 * Hz/Hz) x1 x10 x1 x10

"RX/TX" for "main" RX/TX screen

Panoramics
PSK Panoramic
CW Panoramic
RTTY Panoramic

Miscellaneous
PC ID: B74P0777QCP4
TCP/IP server "On" Full-duplex sound card
Initial RX/TX modes Mixer control
Personal data Log book
Checking serial port Reading a QSO

Patrick De Wever (ON3AD) Roy de Blicquyiaan 80 B-3970 Leopoldsburg Belgium

Selection of the auxiliary sound card in input, for all DSP modes ("Filters", "Analysis", "Binaural")

VERSION 4.38 of (du) 14/11/2018
* replacement of "Message ID" by "Extended Message" (remplacement du "Message ID" par le "Extended Message"),
* taking into account of AERO+EGC migrations (prise en compte des migrations AERO+EGC),
* AERO R/T channel 1200 bauds in C band decoded (exp.) (AERO canaux R/T 1200 bauds en bande C décodés (exp.)),
* bug about the "Options for serial ports" menu fixed (bug à propos du menu "Options pour les ports série" corrigé),

MULTIPSK - THE MULTIMODE DIGITAL TRANSCEIVER * Version 4.38 Configuration

Lang(u)age Translation file Help and licence PC Options for serial ports Serial port Serial port for GPS Serial port for KISS Sound Card (Input) Sound Card (Output)

Auxiliary Sound Card (from an input) Auxiliary Sound Card (to speaker) Mixer Sequence (long macro) Fonts Your Logbook Asiatic charsets (Japanese) Actions Exit to RX/TX screen

Help Deutsche Hilfe

Screen open after start-up
Open "Configuration" screen after start u
Open RX/TX screen after start up

Sound Card 1: Luidsprekers (Realtek High Defi)

Sound Card 2: Realtek Digital Output (Realtek)

Sound Card 3: Luidsprekers (USB Audio CODEC)

Sound Card 4: Oortefoon van hoofdtelefoon (

Decoding: from the sound input or a me
EXAMPLE_BPSK31
Load a new playing sound file
Load a new recording sound file
No recording Recording
Tracking recording on 15 sec 1 minute

Beacon mode (all modes)
Odd message Even message Prior serial number
08/12/18 15:27:27 UTC 0
UTC correction in hours -->
Sequence Sequence Interval Pause Duration
1 1 10 s 15 min
UTC start time for record or beacon
No Yes 00:00

XIT (for PSK modes, THROB(X), MFSK, CW and CCW) and initial RX/TX freq. (200 to 4300 Hz)
XIT as an offset (Hz) XIT: 0 RX Fr.: 1500 TX Fr.: 1500
XIT as a coefficient (0.0001 * Hz/Hz) x1 x10 x1 x10

"RX/TX" for "main" RX/TX screen

Panoramics
PSK Panoramic
CW Panoramic
RTTY Panoramic

Miscellaneous
PC ID: B74P0777QCP4
TCP/IP server "On" Full-duplex sound card
Initial RX/TX modes Mixer control
Personal data Log book
Checking serial port Reading a QSO

Patrick De Wever (ON3AD) Roy de Blicquyiaan 80 B-3970 Leopoldsburg Belgium

Selection of the auxiliary sound card in output, for blind Hams and SWL in JT65 and VOICE, in CCW and for all DSP functions

VERSION 4.38 of (du) 14/11/2018
* replacement of "Message ID" by "Extended Message" (remplacement du "Message ID" par le "Extended Message"),
* taking into account of AERO+EGC migrations (prise en compte des migrations AERO+EGC),
* AERO R/T channel 1200 bauds in C band decoded (exp.) (AERO canaux R/T 1200 bauds en bande C décodés (exp.)),
* bug about the "Options for serial ports" menu fixed (bug à propos du menu "Options pour les ports série" corrigé),

MULTIPSK - THE MULTIMODE DIGITAL TRANSCEIVER * Version 4.38 Configuration

Lang(u)age Translation file Help and licence PC Options for serial ports Serial port Serial port for GPS Serial port for KISS Sound Card (Input) Sound Card (Output)
 Auxiliary Sound Card (from an input) Auxiliary Sound Card (to speaker) Mixer Sequence (long macro) Fonts Your Logbook Asiatic charsets (Japanese) Actions
 Exit to RX/TX screen Software adjustment

Help Deutsche Hilfe

Screen open after start-up
 Open "Configuration" screen after start up
 Open RX/TX screen after start up

IO interfaces for SdR trans
 FUNcube Direct via the sound card
 Softrock RTL/SDR key RTL and
 Auto External SdR TCP/IP Current parameters

Recording duration
 RECORDING
 Load a new recording sound file minutes
 No recording Recording 240
 Tracking recording on 15 sec 1 minute

Beacon mode (all modes)
 Odd message Even message Prior serial number 07/12/18 11:09:02 UTC 0
 UTC correction in hours
 Sequence Sequence Interval Pause Duration
 Yes 1 1 10 s 15 min
 UTC start time for record or beacon
 No Yes 00:00

XIT (for PSK modes, THROB(X), MFSK, CW and CCW) and initial RX/TX freq. (200 to 4300 Hz)
 XIT as an offset (Hz) XIT: 0 RX Fr.: 1000 TX Fr.: 1000
 XIT as a coefficient (0.0001 * Hz/Hz) x1 x10 x1 x10

"RX/TX" for "main" RX/TX screen

Panoramics
 PSK Panoramic
 CW Panoramic
 RTTY Panoramic

Miscellaneous
 TCP/IP server "On"
 Initial RX/TX modes
 Personal data
 Checking serial port
 PC ID: B74P0777QCP4
 Full-duplex sound card
 Mixer control
 Log book
 Reading a QSO

This software is a "freeware" with limitations, for non-commercial use
 Software adjustment of the mixer (Sound Input, Input level and Speaker out) or user adjustment

VERSION 4.38 of (du) 14/11/2018
 * replacement of "Message ID" by "Extended Message" (remplacement du "Message ID" par le "Extended Message"),
 * taking into account of AERO+EGC migrations (prise en compte des migrations AERO+EGC),
 * AERO R/T channel 1200 bauds in C band decoded (exp.) (AERO canaux R/T 1200 bauds en bande C décodés (exp.)),
 * bug about the "Options for serial ports" menu fixed (bug à propos du menu "Options pour les ports série" corrigé),

MULTIPSK V. 4.38 RX/TX screen * MULTIPSK - THE MULTIMODE DIGITAL TRANSCEIVER * Version 4.38

Configuration Adjustments Options Tools PSKReporter Satellites Panoramic Help

TCP/IP SdR spectrum Transceiver Country/Loc World QSO Mail Tune Beacon ID CPU Level 29%

Where? Number? Search Look-up DX/DXView Pathfinder Where? PSKReporter Options are in the logbook
 2 Call Name Freq MHz Mode Ur RST My RST R S Locator QTH Notes Clear Logbook QSO->Log
 UZ4E 7.041800 BPSK 599 599 Ordzhonikid. Cluster L A DXKeeper Conf

EM RX/TX
 Call ID RS ID Video ID QRGS RX RS ID RX Call ID Panoramic 0 bauds Mode
 TX: BPSK31 MODE RX: BPSK31 Auto mode Slave Master Doppler

TX frequency RX frequency Fr. difference Squelch
 999.5 Hz 999.5 Hz 0.0 Hz 0 IMD= Quality=1/5
 S/N<-30 dB Professional modes

200 500 1000 1500 2000 2500 Spectrum Waterfall High
 M1 M2 Go M1 Go M2 More
 << >> XIT Rewind
 Lock Band kHz (F450-4)
 2.5 C 3.3 C 4.3
 Color 10 AGC Grey Frequency

Call 1 F1 CO F2 Call 3 F3 Answer F4 BTU F5 Signoff F6 TX F7 RX F8
 Set 2 Sets File Macros Clear Repeat UTC T/R F9 Info F10 CW end/fan CW answer RX time + callion + mode

Enabled this

Commander is Connected

oe w'ac- i lte: o ll efp-oo e
 troen4tdp9yWp6ea e oteee 2e
 a tu 6 d itoa
 f iieeOn efei ntoee

109 Auto RX/Auto TX TX STOP RX 05/12/18 18:40:09 UTC SpotC. Off Connected