

PAX APRS with UI-VIEW through MULTIPSK (4.11)

Introduction

This document explains how to use the UI-VIEW program ([version 2.39](#)) to transmit and receive PAX APRS frames ([position reports only, without any acknowledgment](#)) through the KISS mode of Multipsk.

Notes about the help in Multipsk:

- To bring up the text help (contextual one), click on the right button of the mouse, with the cursor over the mode button "KISS", for example).
- Also use the button hints (wait a fraction of second over a button).

KISS link through a serial port

The KISS mode allows an exchange between two programs through a selected serial port. The serial link between the client program (here UI-VIEW) and Multipsk can be done either of two ways:

- either through a "null-modem" cable between 2 PC, each PC housing one program,
- or through a virtual "null-modem" which links two virtual serial ports. To create this link and these virtual serial ports, for example, the freeware "com0com" can be used. This is downloadable at the following WEB address:

<http://sourceforge.net/projects/com0com/> (information at <http://com0com.sourceforge.net/>)

Don't forget to rename the CNCA0 and CNCB0 ports in COM2 and COM3 (for example), with C:\Com0com\setupc.exe, so they appear on Multipsk and UI-VIEW. It will be selected COM2 on the Multipsk "Serial port for KISS" menu (see serial port for the GPS or KISS mode) and COM3 on UI-VIEW.

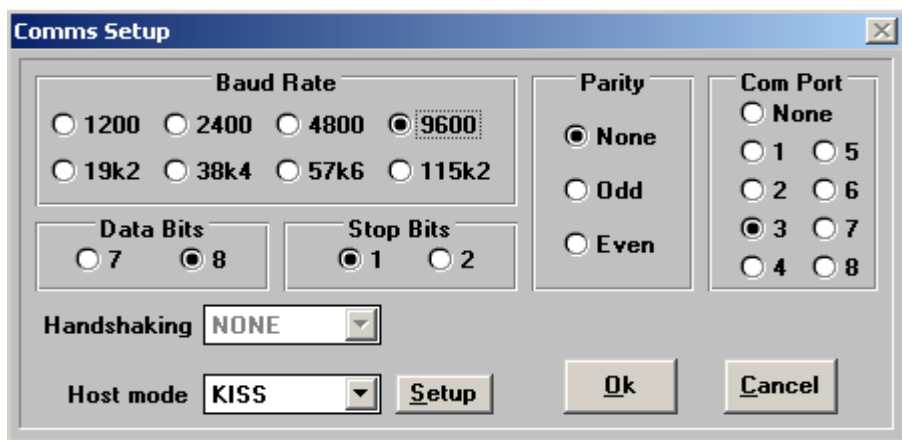
Note for information: there is another program for virtual com port which name is « VSPE » created by Eterlogic.

The KISS mode permits a PAX/PAX2 link between both programs, in both directions (RX/TX).

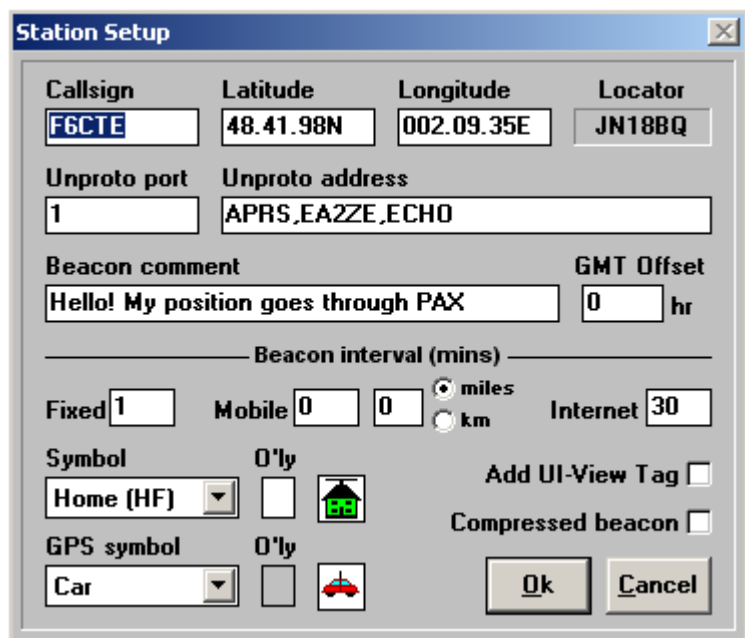
Diagram of the transmission

UI-VIEW(transmitted position)→Kiss→ Multipsk→PAX or PAX2 transmission→Multipsk→Kiss→UI-VIEW (received position)

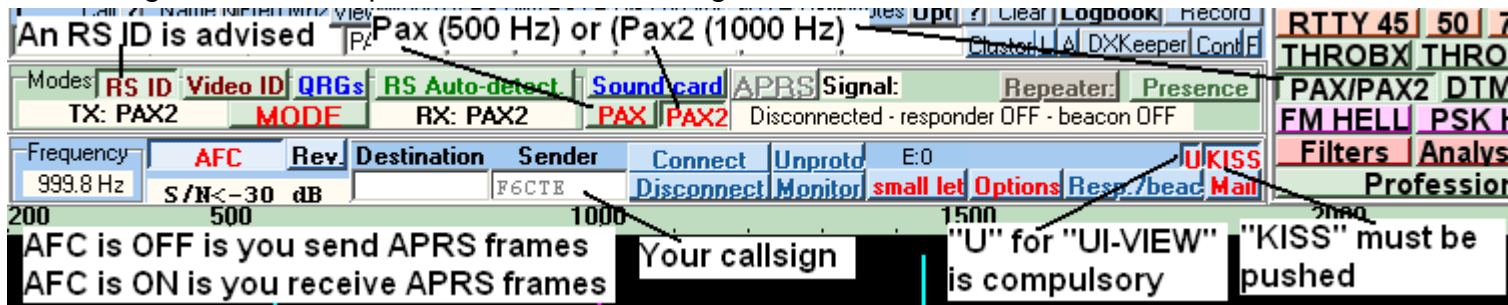
Multipsk has these communication parameters: 9600 bauds, 8 data bits, 1 stop bit, no parity. These parameters must be set in UI-VIEW (« Setup » menu, « Comms setup » option).



The UI-VIEW station setup must be done (« Setup » menu, « Station setup » option). Here it is added two repeaters (maximum in PAX/PAX2): the station «EA2ZE» and the generic HF repeater « ECHO ». They can be removed, so that the following Unproto address will be simply « APRS ». A comment (35 characters max in PAX/PAX2) can accompany the position (here : « Hello! My position goes through PAX »).

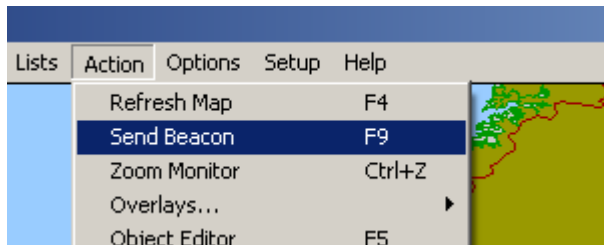


The Configuration in Multipsk must be the following :

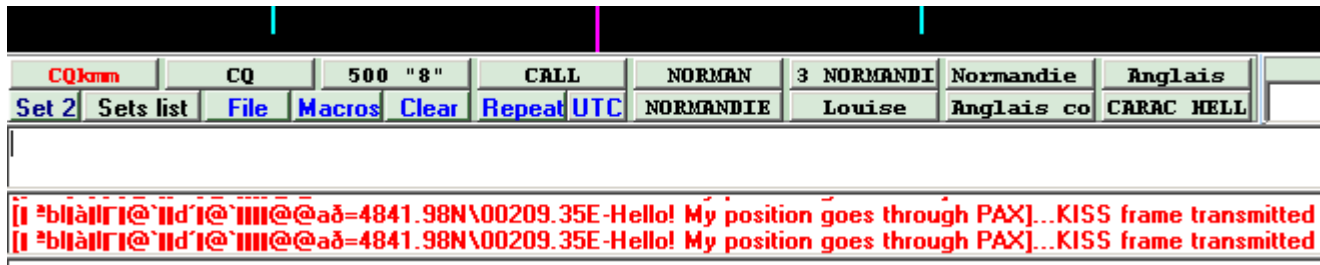


The "U" ("U" for "UI-VIEW") button allows the working in KISS mode with UI-VIEW, through a transformation of the Packet UI frames in Pax UI frames and reversely.

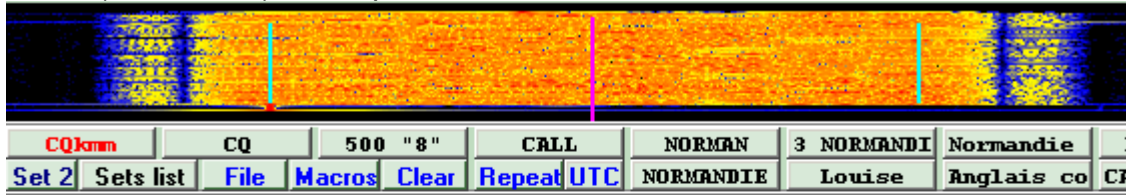
Once Multipsk and Ui-VIEW started, to send APRS position from UI-VIEW :



Here is part of the Multipsk screen, after reception of the position sent by UI-VIEW through the Kiss link. This UI-VIEW frame will be repeated by transmission in PAX or PAX2.



Here is part of the Multipsk screen, after reception of the position transmitted by the other Multipsk (previous screen) in PAX or PAX2 (PAX2 here) and repetition towards UI-VIEW in Kiss mode:



```
=4841.98N/00209.35E-HELLO! MY POSITION GOES THROUGH PAX
...KISS frame repeated
=4841.98N/00209.35E-HELLO! MY POSITION GOES THROUGH PAX
...KISS frame repeated
```

Here is part of the UI-VIEW screen, after reception of the position transmitted by Multipsk to UI-VIEW in Kiss mode :

